



2023 Product Catalog

See Separate Price Sheet

About Us



Since 1925, Edlund has been on the cutting edge of kitchen equipment -- providing food service and food processing customers worldwide with quality solutions that take today's operations to the next level. Known for innovation, our scales have earned best in class 14 times, and our smallwares and kitchen prep equipment have been recognized repeatedly for excellence in product design and innovation. In fact, Catering Insight Magazine (UK) recently recognized the ARC! XL overall kitchen prep winner. Our extensive array of products is backed by the vast resources of the Ali group. And, with manufacturing facilities in Vermont, USA, along with distribution centers in the USA, Belgium Canada and Hong Kong, we can be in your kitchen in just days.



14 Times

Customer Service

The most important thing we can do to ensure your complete satisfaction is to provide you with excellent customer service. Our customer service team is dedicated to providing you with quick answers to your questions about our products or to solving any problems you may have.

Tel: 1-802-862-9661
Toll Free: 1-800-772-2126
Fax: 802-862-4822
Email: CustomerService@edlundco.com

International Customers

Please Call:
001-802-862-9661

Table of Contents

Kitchen Equipment Preparation

Controlling Costs	3
Meat Slicers	4-7
Meat Grinders	8-9
Burger Presses	10-13
Titan Slicer™	14-15
ARC! XL Manual Fruit and Vegetable Slicer™	16
ARC! Manual Fruit and Vegetable Slicer™	17
Tomato Laser™ Slicer	18-19
Electric Slicers	20-21
Electric Knife Sharpeners	22-23
Griddle Scraper Sharpener	23
Smart Tong Holders	24
Tongs	25
Cold Pan Display Boxes	26
Meat Grinder Current Advertising	27

Kitchen Equipment Sanitation & Storage

Helios™ UV Knife Sterilizer Cabinet	29
Knife Sterilizing Systems	30
NSF Knife Racks and Blocks	31-32
Film and Foil Dispenser	33

Scales

The Importance of Portion Control	35
Wireless Pizza Scales	36-39
High Profile™ Scales	40-43
NEW BRAVO!™ Waterproof Submersible Scale	44
NEW BRAVO!™ BRV-160 OP	45
BRAVO!™ Digital Portion Scales	46-49
Poseidon™ Series NSF Digital Portion Scales	50
EDL Series NSF Digital Portion Scales	51
Precision Gram Scale	52
Precision Cannabis Scale	53
DFG Series Precision Portion Scales	54
Current Pizza Scale Advertising	55
E Series Economy Portion Scales	56
EPZ Digital Pizza Scale	57
ERS Series Digital Receiving Scales	58

Five Star NSF Dishwasher Safe Mechanical Portion Scales	59
Four Star NSF Dishwasher Safe Mechanical Portion Scales	60
Premier Dishwasher Safe NSF Mechanical Portion Scales	61-62
Compact Series NSF Mechanical Portion Scales	63
Heavy Duty NSF Mechanical Portion and Receiving Scales	64-65
Bakers Dough Scales	66
Current Scale Advertising	67

Can Openers

Can Opener Reference Chart	69
Edvantage® #1® Manual Can Opener	70-71
S-11 and SG2 Series Manual Can Openers	72
U Series NSF Manual Can Openers	72
G Series NSF Manual Can Openers	73
#1® and #2® Manual Can Openers	73
Can Opening Table	74-75
2022/2023 Advertising	76-77

High Volume Can Opening Solutions

Electric Can Openers	78
Heavy Duty Crown Punch Can Openers	79
Crown Punch Can Openers	79
Electric Can Crushers	80
Air Powered Can Crushers	80
Current Advertising	81

Parts and Accessories

82-84

Ordering & Warranty Information

Inside Back Cover



Kitchen Equipment Preparation



Always striving for absolute perfection, all Edlund products are meticulously inspected and tested for quality. Here, a production specialist puts the finishing touches on the NEW ARC! Manual Fruit & Vegetable Slicer in our state-of-the-art Vermont manufacturing facility.



Kitchen Equipment/Prep

CONTROLLING COSTS

Use the following charts as examples to determine how quickly Edlund's NEW kitchen slicers and knife sharpeners can pay for themselves in a busy commercial operation. (Costs subject to change.)

ARC!™ & LASER™ SAVINGS CHART - TOMATO COST VS LOSS VS PAYBACK

TOMATOES PER DAY	100	200	400	800	1,000
Cost each	\$0.70	\$0.70	\$0.70	\$0.70	\$0.70
Cost per day	\$70.00	\$140.00	\$280.00	\$560.00	\$700.00
Cost per month 26 days	\$1,820.00	\$3,640.00	\$7,280.00	\$14,560.00	\$18,200.00
Tomato costs can vary. Costs are estimates.					
WASTE BASED IN DOLLARS FOR 26 DAYS PER MONTH					
10% waste per month	\$182.00	\$364.00	\$728.00	\$1,456.00	\$1,820.00
20% waste per month	\$364.00	\$728.00	\$1,456.00	\$1,820.00	\$3,640.00
30% waste per month	\$546.00	\$1,092.00	\$2,184.00	\$2,730.00	\$5,460.00
PAY BACK IN MONTHS					
	MONTHS	MONTHS	MONTHS	MONTHS	MONTHS
Based on 10% waste	4.7* 3.2†	2.3* 1.6†	1.2* .80†	.60* .40†	.45* .30†
Based on 20% waste	2.3* 1.6†	1.2* .75†	.60* .40†	.45* .30†	.20* .15†
Based on 30% waste	1.5* 1.1†	.77* .53†	.40* .25†	.30* .20†	.15* .10†
* Assuming ARC! Slicer sales price of \$850.00 † Assuming Laser Slicer sales price of \$580.00					

401 KNIFE SHARPENER COST COMPARISON CHART

COST OF KNIFE SHARPENING SERVICE FOR MULTIPLE RESTAURANTS					
NUMBER OF STORES	AVERAGE WEEKLY SHARPENING COST	WEEKS / YEAR	EXTENDED ANNUAL COST	MONTHLY COST	
1	\$20.00	52	\$1,040.00	\$86.67	
10	\$20.00	52	\$10,400.00	\$866.67	
100	\$20.00	52	\$104,000.00	\$8,666.67	
500	\$20.00	52	\$520,000.00	\$43,333.33	
1000	\$20.00	52	\$1,040,000.00	\$86,666.67	
COST OF SELF-SHARPENING WITH THE 401 SHARPENER					
AVERAGE RETAIL COST	NUMBER OF STORES				
	1	10	100	500	1,000
401 Sharpener	\$510.00	\$5,100.00	\$51,000.00	\$255,000.00	\$510,000.00
Knives*	\$95.00	\$950.00	\$9,500.00	\$47,500.00	\$95,000.00
Total Cost of Self-Sharpener**	\$605.00	\$6,050.00	\$60,500.00	\$302,500.00	\$605,000.00
Total Cost of Sharpening Service	\$1,040.00	\$10,400.00	\$104,000.00	\$520,000.00	\$1,040,000.00
1st Year Savings	\$435.00	\$4,350.00	\$43,500.00	\$217,000.00	\$435,000.00
Average Ongoing Yearly Savings***	\$945.00	\$9,450.00	\$94,500.00	\$472,500.00	\$945,000.00
* Knife cost includes 2 each Boning, Paring, 10" Chef's Knives, 8" Chef's Knives and Slicers. ** Savings from reduction in workman's comp, greater food yield and lost production time is offset by the additional labor cost of self-sharpening. *** Includes cost for total replacement of knives annually.					

NEW EDVANTAGE® ELECTRIC SLICERS



EDV-12C Slicer shown with optional removable scale platform and Edlund digital scale



EDV-10C
10" Compact



EDV-12C
12" Compact



EDV-12
12" Medium Duty

NEW EDVANTAGE® ELECTRIC SLICERS

Edlund proudly introduces our new Edvantage meat slicers, with all the performance, safety, and sanitation features you're looking for, but missing in other slicers. More powerful motors for easier slicing of meats and cheeses, more switches and covers to protect operators during use, and easily removable components to making cleaning faster and safer. Whether you need just a compact 10" slicer or require the power and performance of a 12" model with a full 1/2 HP motor, you can now take Edvantage of these new models from Edlund, the new, sharper choice in slicing!



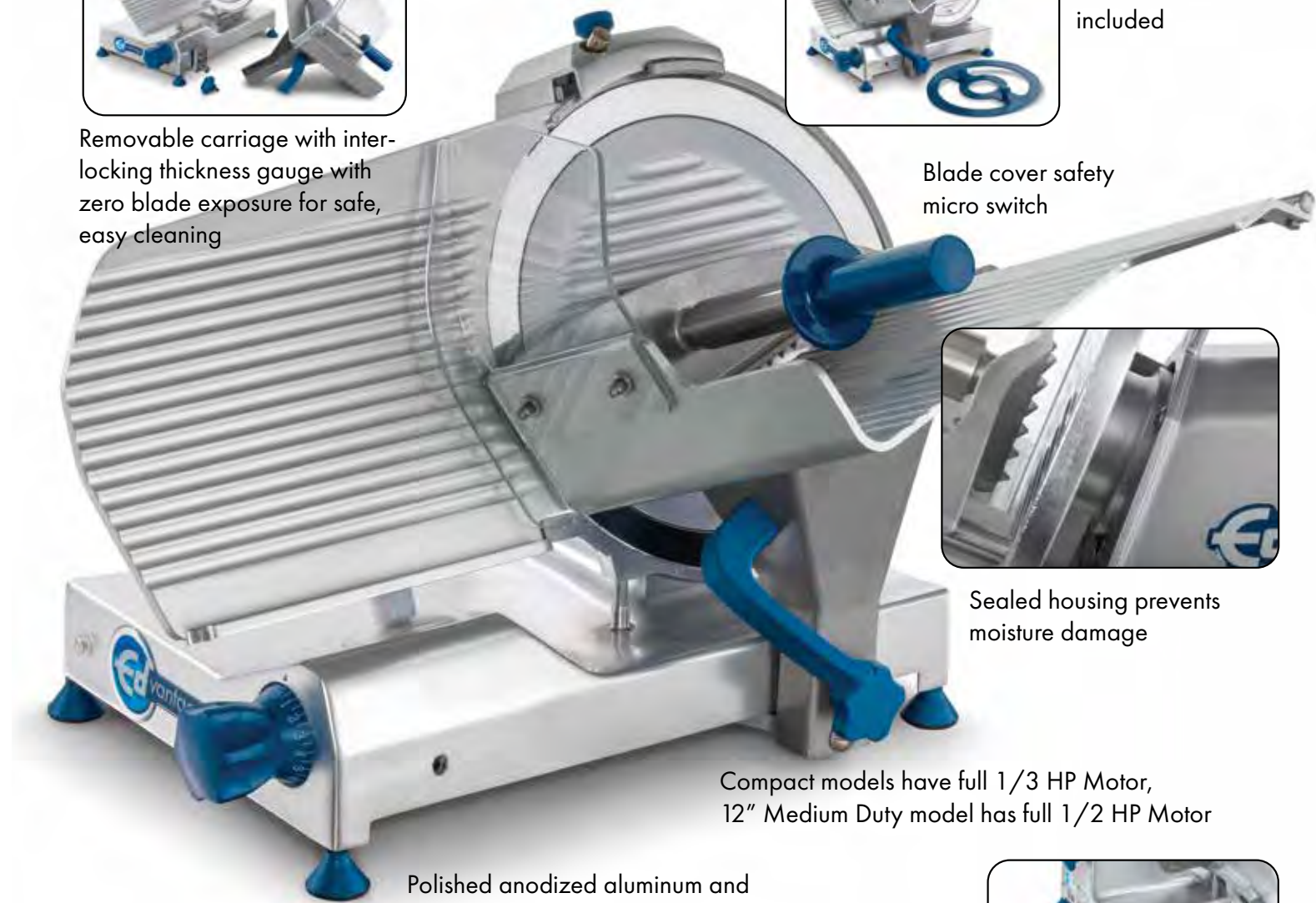
Built-in sharpener with 2 sharpening stones



Special Blade removal tool included

Removable carriage with interlocking thickness gauge with zero blade exposure for safe, easy cleaning

Blade cover safety micro switch



Sealed housing prevents moisture damage

Compact models have full 1/3 HP Motor, 12" Medium Duty model has full 1/2 HP Motor

Polished anodized aluminum and stainless-steel construction



Optional scale tray attachment accepts multiple Edlund scales



NEW EDVANTAGE® ELECTRIC SLICERS

The clear advantage in slicer safety, productivity, and cleanability!



Blade cover release knob with safety micro switch



Switches mounted on top to reduce failures



Wide gap between blade and housing for more thorough cleaning



Heavy-duty stainless-steel product pusher rod



Bright blue light indicates when slicer is running



Tritan™ clear hand guard standard on all models



Dual ergonomic handles for easier slicing



Removable stainless-steel slice deflector

NEW EDVANTAGE® ELECTRIC SLICERS

EDV-10C 10" Compact

- Anodized cast aluminum and stainless construction
- Top mounted switches reduce failures
- Full 1/3 HP ventilated motor
- Belt drive motor
- Tritan™ clear hand guard standard
- Built-in dual stone sharpener
- Forged, hardened 10" blade
- Special blade removal tool included
- Safety micro switch when blade guard is removed
- Removable carriage for easy cleaning
- Interlocking thickness gauge with zero blade exposure when carriage is removed
- Heavy-duty SS Product Pusher Rod
- Removable stainless-steel slice deflector
- Sealed Housing prevents moisture damage
- Dual ergonomic handles for easy slicing
- Bright blue light on front indicates slicer is running
- Safety overload switch on bottom
- Optional P488 attachable scale platform available
- Exclusive Edvantage warranty

EDV-12C 12" Compact

- Anodized cast aluminum and stainless construction
- Top mounted switches reduce failures
- Full 1/3 HP ventilated motor
- Belt drive motor
- Tritan™ clear hand guard standard
- Built-in dual stone sharpener
- Forged, hardened 12" blade
- Special blade removal tool included
- Safety micro switch when blade guard is removed
- Removable carriage for easy cleaning
- Interlocking thickness gauge with zero blade exposure when carriage is removed
- Heavy-duty SS Product Pusher Rod
- Removable stainless-steel slice deflector
- Sealed Housing prevents moisture damage
- Dual ergonomic handles for easy slicing
- Bright blue light on front indicates slicer is running
- Safety overload switch on bottom
- Optional P488 attachable scale platform available
- Exclusive Edvantage warranty

EDV-12 12" Medium Duty

- Anodized cast aluminum and stainless construction
- Top mounted switches reduce failures
- Full 1/2 HP ventilated motor
- Belt drive motor
- Tritan™ clear hand guard standard
- Built-in dual stone sharpener
- Forged, hardened 12" blade
- Special blade removal tool included
- Safety micro switch when blade guard is removed
- Removable carriage for easy cleaning
- Interlocking thickness gauge with zero blade exposure when carriage is removed
- Heavy-duty SS Product Pusher Rod
- Removable stainless-steel slice deflector
- Sealed Housing prevents moisture damage
- Dual ergonomic handles for easy slicing
- Bright blue light on front indicates slicer is running
- Safety overload switch on bottom
- Optional P488 attachable scale platform available
- Exclusive Edvantage warranty

Model Number	Description	Product Code	Case Cube Ft ³ /M ³	Master Case	Case Weight lbs./kgs
EDV-10C	10" COMPACT SLICER	31100	5.80/0.17	1	43/19.35
EDV-12C	12" COMPACT SLICER	31200	6.22/0.18	1	48/21.60
EDV-12M	12" MEDIUM DUTY SLICER	31300	8.49/0.25	1	54/24.30
	EDV-10C/12C SCALE PLATFORM	P488			
	EDV-12 SCALE PLATFORM	P489			

NEW EDVANTAGE® EDVG SERIES MEAT GRINDERS

Getting burned out from the poor performance of your current meat grinder? Introducing the new Edvantage® Series Meat Grinders by Edlund. These high efficiency light and medium duty grinders have a new modern design that features full exterior mounted grinding components that eliminate the hard to clean wormhole and their double sealed interior components help prevent potential backwash leakage. The large fan cooled ventilated motors will run for longer periods and stay cooler to the touch than competitive models. Other unique features include a bright blue light indicating when the grinder is running, and a convenient storage drawer to hold an extra plate and knife. Plus, since all of the grinding components are exterior mounted, clean-up is fast, easy, and more sanitary.



Features:

- 3 Models available
- New! Ultra-Modern Design
- Heavy-Duty anodized aluminum housing
- Ventilated motor for longer, cooler operation reduces overheating
- Hermetically sealed gearbox with oil bath gears eliminates splash back or leakage
- EDVG-12SS features stainless steel propeller and feed chute
- Stainless steel feed pan and plastic pusher included
- Forward/reverse switch
- Exclusive! Built-in storage drawer for knife and blade
- Exclusive 2-year warranty!

NEW EDVANTAGE® EDVG SERIES MEAT GRINDERS

Time to leave the old grind behind!

Both models feature a bright blue light indicating cooling fan is running

Both models feature a slide out drawer for convenient storage of extra plate and knife

Completely sealed gearbox with hardened gears in oil bath eliminates potential leakage to interior

Illuminated On/Off switch and reverse shuttle switch

All grinding components are mounted externally for quick and easy removal. No wormhole to clean out.

Large blower fan keeps unit cooler

ETL Intertek 9801614

CONFORMS TO UL STD 763; NSF STD 8
CERTIFIED TO CSA STD C22.2 NO.195

Model Number	Description	Product Code	Case Cube Ft ³ /M ³	Master Case	Case Weight lbs./kgs
EDVG-8	MEAT GRINDER	31400	2.75/.08	1	36/16.40
EDVG-12A	MEAT GRINDER	31500	3.70/.10	1	60/27.25
EDVG-12SS	MEAT GRINDER WITH STAINLESS STEEL COMPONENTS	31600	3.70/.10	1	60/27.25

New! EBP Multi-purpose 7 inch Burger Press

Introducing Edlund's new EBP 7 inch Burger Press, the only model that converts to a 4.5 inch or 5 inch without tools or expensive extra parts. Just drop in the appropriate conversion insert, pull the handle, and your 7 inch Press instantly forms the burger size and weight you prefer. And with Edlund's exclusive Slider insert, you can quickly form 3 2.5 oz perfect sliders.

Add our exclusive scale platform attachment and an Edlund scale, and you have the perfect system for perfect burgers and consistent portion control. Whether you're serving hamburgers, turkey burgers, or veggie burgers, your profits will be on a roll.



Features:

- Anodized aluminum and stainless-steel construction
- 3 inserts available: 4.5 inch, 5 inch, and 3 hole slider
- Built in separator sheet holder
- Removable press insert for easy cleaning
- ETL Sanitation Listed
- Optional stainless steel scale platform attachment available (fits multiple Edlund scales)



New! EBP Multi-purpose 7 inch Burger Press

Big Burgers or small, only Edlund Burger Presses do it all!



Model Number	Description	Product Code	Case Cube F3/M3	Master Case	Case Weight lbs./kgs
EBP-700	7 INCH (180MM) BURGER PRESS	32300		1	15.5/7
	CELLOPHANE SEPARATOR SHEETS	CE112		1 Approx 500	1/.5
	SPACER, EBP SLIDER INSERT	S935		1	1/.5
	SPACER, EBP 4.5 INCH INSERT	S937		1	1/.5
	SPACER, EBP 5 INCH INSERT	S938		1	1/.5
	SCALE PLATFORM	P486		1	1/.5



Intertek
9801614

CONFORMS TO NSF STD 2

New! EBP 4.5 & 5 inch Burger Press

Introducing Edlund's new EBP Series Burger Presses, the surest way to get consistent, perfectly formed burger patties with the thickness and pre-cooked weight you can control. Just place the pre-weighed meat into the forming cylinder and pull the handle. Push the handle back and your perfect burger rises, ready to cook.

Add our exclusive scale platform attachment and an Edlund scale, and you have the perfect system for perfect burgers and consistent portion control. Whether you're serving hamburgers, turkey burgers, or veggie burgers, you'll have a sizzling solution to high volume burger production!



Model EBP-450 Burger Press Shown

Model BRV-160W
Waterproof scale shown

Features:

- Anodized aluminum and stainless-steel construction
- Optional quick conversion 4.5 inch insert available for EBP-500
- Built in separator sheet holder
- Cellophane separator sheets available
- Removable press insert for easy cleaning
- ETL Sanitation Listed
- Optional stainless steel scale platform attachment available (fits multiple Edlund scales)



Model EBP-450

Model EBP-500

New! EBP 4.5 & 5 inch Burger Press

See how perfect portions can help your bottom line sizzle, with Edlund Burger Presses!

Model EBP-450

Recommended BRV-160W digital portion control scale

Optional scale platforms fit multiple Edlund scales

5 inch and 4.5 inch cellophane separator sheets available (approx 500 count)

Removable press insert for easy cleaning

Model EBP-500

Optional 4.5 inch insert for EBP-500 (makes conversion easy)

Model Number	Description	Product Code	Case Cube Ft ³ /M ³	Master Case	Case Weight lbs./kgs
EBP-450	4.5 INCH (110MM) BURGER PRESS	32000		1	10/4.7
	CELLOPHANE SEPARATOR SHEETS	CE110		1 Approx 500	1.5/.7
	EBP-450 SCALE PLATFORM	P487		1	1.5/.7
EBP-500	5 INCH (130MM) HEAVY DUTY BURGER PRESS	32100		1	13.25/7
	CELLOPHANE SEPARATOR SHEETS	CE110		1 Approx 500	1.5/.7
	EBP-500 SCALE PLATFORM	P486		1	1.5/.7
	SPACER, EBP 4.5 INCH INSERT (for EBP-500)	S939		1	1/.5



CONFORMS TO NSF STD 2

Kitchen Equipment/Prep

Titan Series Max-Cut™



Edlund proudly introduces the first and only all-in-one stainless steel Slicer, Dicer, Wedger, Corer, and French fry cutter that replaces all those other products that leave you wanting more.

Our exclusive Made in U.S.A. patent-pending design lets you move quickly and easily from wall to table mounting with the available quick connect base or wall bracket. Plus, our quick change pusher and all stainless steel blade assemblies with protective wash guards feature the largest cutting surface available to make short work of your food prep tasks.

Add in heavy duty dishwasher safe construction, NSF certification, and multiple cutting options and you've got maximum performance from just one machine.

The Titan Max Cut from Edlund.....no other product can duel with it!

- Patent Pending
- NSF Certified
- Slices, dices, wedges, cores, cuts fries
- Even cuts sweet potato fries*
- Choose from 1/4", 3/8" or 1/2" dice or fries
- Cuts 6 section or 8 section wedges of potatoes, tomatoes, lemons, limes, etc., and cores apples, pears, ect.
- Extra blade cartridge storage compartment built in to unit
- Cuts up to 6 1/2" long potatoes or other vegetables into fries
- All stainless steel construction
- Quick disconnect unit mounts on wall bracket or table base
- Dishwasher safe
- **Made in the USA**



* Note: sweet potatoes must be par-baked to soften before cutting.

Model Number	Description	Product Code	Case Cube Ft3/M3	Master Case	Case Weight lbs./kgs
FDWW-014	Titan 1/4" (6.5mm) Dicer Unit w/Wall Mount Bracket	29100	6/.017	1	38/17.3
FDW-014	Titan 1/4" (6.5mm) Dicer Unit w/Suction Cup Base	29110	6/.017	1	35/15.8
FDWW-038	Titan 3/8" (10mm) Dicer Unit w/Wall Mount Bracket	29200	6/.017	1	38/17.3
FDW-038	Titan 3/8" (10mm) Dicer Unit w/Suction Cup Base	29210	6/.017	1	35/15.8
FDWW-012	Titan 1/2" (13mm) Dicer Unit w/Wall Mount Bracket	29300	6/.017	1	38/17.3
FDW-012	Titan 1/2" (13mm) Dicer Unit w/Suction Cup Base	29310	6/.017	1	35/15.8
FDW	Titan no Blades/Pusher/Base/Bracket	29400	6/.017	1	35/15.8
	1/4" Grid Blade Cart. W/ Wash Guard & Pusher	AS035+PT142**			
	3/8" Grid Blade Cart. W/ Wash Guard & Pusher	AS036+PT380**			
	1/2" Grid Blade Cart. W/ Wash Guard & Pusher	AS037+PT142**			
	6-Slice Wedger Cart. W/ Wash Guard & Pusher	AS039+WT006**			
	8-Slice Wedger Cart. W/ Wash Guard & Pusher	AS040+WT048**			
	6-Slice Coring Cart. W/ Wash Guard & Pusher	AS045+WT006C**			
	8-Slice Coring Cart. W/ Wash Guard & Pusher	AS046+WT048C**			
	Base, Titan Permanent Mount/Wall Bracket	B725			
	Base, Titan Suction-Cup	B727			
FDWW-16S	Titan Max-Cut, 3/16" slicer unit w/ wall mount bracket	29500	6/.017	1	38/17.3
FDW-16S	Titan Max-Cut, 3/16" slicer unit w/ suction cup base	29510	6/.017	1	35/15.8
FDWW-14S	Titan Max-Cut, 1/4" slicer unit w/ wall mount bracket	29600	6/.017	1	38/17.3
FDW-14S	Titan Max-Cut, 1/4" slicer unit w/ suction cup base	29610	6/.017	1	35/15.8
FDWW-38S	Titan Max-Cut, 3/8" slicer unit w/ wall mount bracket	29700	6/.017	1	38/17.3
FDW-38S	Titan Max-Cut, 3/8" slicer unit w/ suction cup base	29710	6/.017	1	35/15.8
FDWW-12S	Titan Max-Cut, 1/2" slicer unit w/ wall mount bracket	29800	6/.017	1	38/17.3
FDW-12S	Titan Max-Cut, 1/2" slicer unit w/ suction cup base	29810	6/.017	1	35/15.8
	3/16" Slicer Blade Cart. W/ Wash Guard & Pusher	AS071+TS316**			
	1/4" Slicer Blade Cart. W/ Wash Guard & Pusher	AS072+TS140**			
	3/8" Slicer Blade Cart. W/ Wash Guard & Pusher	AS073+TS380**			
	1/2" Slicer Blade Cart. W/ Wash Guard & Pusher	AS074+TS140**			

**NOTE: These items must be purchased together or see parts page for individual prices

Kitchen Equipment/Prep

Titan Series Max-Cut™

Maximum productivity with minimal effort in a **Cutting** edge design!



NEW

French fries, steak fries, lemon wedges, sliced and diced tomatoes & onions, even cored apple wedges; just snap in the appropriate blade and pusher. The Max-Cut does more volume, faster, than any other manual product.



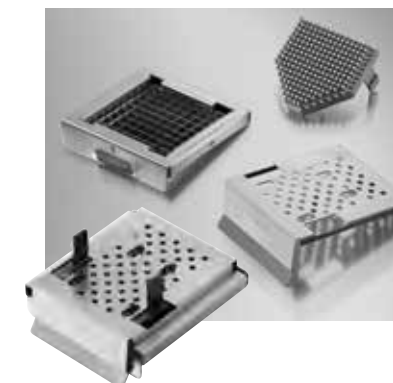
Wall Dimensions: 9.5" x 15.0" x 30.0" 240mm x 380mm x 760mm
Table Dimensions: 9.5" x 24.0" x 24.0" 240mm x 610mm x 760mm



Suction Cup Table Base



Quick disconnect wall mount bracket



All stainless steel blade cartridge and NSF plastic pusher with protective wash guard protects operators while making cut changeovers faster and dishwasher clean-up a snap

ARC! XL Patented Manual Fruit & Vegetable Slicer - Now improved for even longer blade life



Edlund's new ARC! XL stainless steel manual slicer takes on the big guys that other slicers are afraid of. We mean the big beefsteak tomatoes and the colossal onions that are just too big or too hard to slice in other machines. And like the original ARC!, it will slice those onions and tomatoes perfectly, as well as many other hard and soft products, in the same machine. Need to cut heads of lettuce? No problem. The ARC! XL's hopper is large enough to do a great job on Iceberg and other lettuce products.* Plus, with our exclusive patented design, you never have to place any product directly on the blades. Our unique Pusher/Hopper allows safe and perfect positioning of the product to be sliced, as well as for loading smaller soft products for faster bulk slicing. And the oversize hopper even makes short work of slicing cooked chicken breasts. Blade cartridges and pusher/hopper assemblies take less than 30 seconds to remove for cleaning or to change sizes, and with Edlund's proprietary safety wash guards, you never have to worry about handling the extra sharp blades. This is the revolutionary new slicer that takes on the big jobs, and provides even bigger results. The ARC! XL from Edlund....Go Big or Go Home!

Features:

- Slices almost anything, from Apples to Zucchini
- Exclusive patented design
- Slices onions and tomatoes up to 4 1/2"
- Shreds heads of lettuce*
- 3/16", 1/4", and 3/8" sizes available
- Special pushers available for smaller produce like mushrooms and strawberries
- Front load design accepts 1/2 and full size pans up to 6" high
- All stainless steel construction
- Ergonomic two-handed design for easier slicing
- Stainless steel blade cartridge and pusher assembly remove easily with no tools
- Unique pusher/hopper keeps fingers away from blades
- Proprietary wash guard protects operators from cuts during cleaning
- Dishwasher safe (tall door type)
- NSF Certified
- **Made in USA**

With the ARC! XL's exclusive patented pusher/hopper design, you never have to worry about placing products directly on the blades. Plus, with its 4 1/2" x 4 1/2" opening, jumbo beefsteak tomatoes and colossal onions are easy to slice. Heads of lettuce too*!



The ARC! XL fits in a standard dish rack for easy dishwasher safe cleaning.†

Heavy duty pusher/hopper and blade cartridge remove in seconds with no tools for easy dishwasher safe cleaning, and Edlund's exclusive washguard system attaches to blade cartridge to ensure safe handling of sharp blades.

Dimensions: 9.5" x 23.0" x 29.0" 240mm x 590mm x 740mm



Model Number	Description	Product Code	Case Cube Ft ³ /M ³	Master Case	Case Weight lbs./kgs
ARC XL-136	ARC! XL Slicer with 3/16" Blades	30400	6/0.17	1	32/14.5
ARC XL-125	ARC! XL Slicer with 1/4" Blades	30500	6/0.17	1	32/14.5
ARC XL-138	ARC! XL Slicer with 3/8" blades	30600	6/0.17	1	32/14.5
Replacement Blade Assembly Cartridge					
	3/16" Slice	AS150	1	1	
	1/4" Slice	AS151	1	1	
	3/8" Slice	AS152	1	1	
Replacement Pusher Assembly Cartridge					
	3/16" Slice	AS065 /AS065S**	1	1	
	1/4" Slice	AS066/AS066S**	1	1	
	3/8" Slice	AS068/AS068S**	1	1	

†Note: Tall door type dishwasher *Note: Some lettuce may need to be cut in half **Note: Indicates small produce pusher product code

ARC! Patented Manual Fruit & Vegetable Slicer - Now improved for even longer blade life

There are lots of Manual slicers out there that will slice hard products like onions and potatoes, but they don't do a great job on soft products like ripe tomatoes. There are also great manual tomato slicers that work well, but they just can't cut an onion. That's all about to change! Edlund introduces the ARC! fruit and vegetable slicer, the first slicer that can cut through an onion or potato with ease, and, slice a very ripe tomato even better. Plus, with our exclusive patented design, you never have to place the product directly on the blades. The unique Pusher/Hopper allows safe and perfect positioning of the product to be sliced, as well as for loading smaller soft products like strawberries for faster bulk slicing. Our quick change blade cartridge with wash guard ensures safe handling and the all stainless steel construction of the ARC! will weather any storm. The ARC! from Edlund. Even Noah would be impressed.

Features:

- Exclusive Patented Design
- All stainless steel construction
- Slices onions and tomatoes up to 3.5"
- NSF Certified
- Dishwasher safe (Fits in Flight type dishwasher)
- Available in 3/16", 1/4", and 3/8" sizes
- Special pusher available for smaller produce like mushrooms and strawberries
- Unique pusher/hopper keeps fingers away from blades
- S/S Blade cartridge and pusher assembly removes easily without tools
- Cartridge wash guard protects operator from cuts
- Ergonomic two handed design for easier slicing
- Front load design accepts 1/2 and full pans up to 6" high
- **Made in USA**



Dimensions: L=17 5/8" (413mm) W=10 1/2" (448mm) H= 16 1/4" (267mm)



The ARC! fits in a standard dish rack for easy dishwasher safe cleaning.



Stainless steel blade cartridge and pusher assembly are easily removed without tools and the stainless wash guard protects the operator from the sharp blades during cleaning or replacement



Model Number	Description	Product Code	Case Cube Ft ³ /M ³	Master Case	Case Weight lbs./kgs
ARC-136	ARC! Slicer with 3/16" Blades	30100	2.53/.072	1	32/14.5
ARC-125	ARC! Slicer with 1/4" Blades	30200	2.53/.072	1	32/14.5
ARC-138	ARC! Slicer with 3/8" blades	30300	2.53/.072	1	32/14.5
Replacement Blade Assembly Cartridge					
	3/16" Slice	AS014	1	1	
	1/4" Slice	AS015	1	1	
	3/8" Slice	AS016	1	1	
Replacement Pusher Assembly Cartridge					
	3/16" Slices	AS060/AS020*	1	1	
	1/4" Slices	AS061/AS021*	1	1	
	3/8" Slices	AS063/AS022*	1	1	

*Note: Indicates small produce pusher

Kitchen Equipment/Prep

Tomato Laser™ Slicer

Sure, you've been slicing tomatoes with those 1950's style aluminum tomato slicers for a long time now, but you've never really been happy with their performance on really ripe tomatoes, or how difficult they are to clean, or where the tomatoes end up...the list goes on. Well, now Edlund introduces the Laser, the easiest, fastest, and most advanced manual tomato slicer the industry has ever seen.

Our patented slicer is NSF Certified, all stainless steel, and fits in a standard dish rack for thorough dishwasher safe cleaning. Plus, our exclusive staggered blade cartridge ensures a perfectly sliced tomato every time, and our heavy duty suction cup feet keep the slicer in place no matter where you want to use it. The Tomato Laser from Edlund...a beam of light in kitchen preparation.



Model Number	Description	Product Code	Case Cube Ft ³ /M ³	Master Case	Case Weight lbs./kgs
ETL-316	Slicer with 3/16" Blades	30700	2/.06	1	20/9
ETL-140	Slicer with 1/4" Blades	30800	2/.06	1	20/9
ETL-380	Slicer with 3/8" Blades	30900	2/.06	1	20/9
Replacement Blade Assembly Cartridge					
	3/16" Slice	AS018	1	1	
	1/4" Slice	AS017	1	1	
	3/8" Slice	AS019	1	1	
Replacement Pusher Assembly Cartridge					
	3/16" & 3/8" Slice Replacement Pusher Assembly Cartridge (Gen 2)	AS054	1	1	
	1/4" Slice Replacement Pusher Assembly Cartridge (Gen 2)	AS055	1	1	

Kitchen Equipment/Prep

Tomato Laser™ Slicer



Unique design allows easy slicing of even very ripe tomatoes

Edlund's exclusive staggered blade design and self-lubricating pusher system guide tomato through blades with minimum effort

Features:

- Exclusive Patented Design
- NSF Certified
- All stainless steel construction
- Dishwasher safe
- Exclusive Staggered Blade slicing system

- S/S Blade cartridge removes easily without tools
- S/S wash guard protects operator from contact with sharp blades
- Entire unit fits in standard dish rack
- Heavy duty suction cup feet keep unit in place
- **Made in USA**



Blade cartridge, pusher assembly, frame, and wash guard disassemble easily and fit into a standard dish rack for thorough dishwasher safe cleaning



Even a 6" deep pan fits under blade assembly allowing for bulk slicing and faster production

Kitchen Equipment/Prep

Both Models Feature:



All stainless steel pusher assembly with interchangeable plastic pusher cartridges.

350 SERIES ELECTRIC SLICER

The only electric tomato slicer in the industry. Now improved with added safety features! Our outstanding electric tomato slicers also slice soft fruits and vegetables... **Fast!** You'll get clean-cut uniform slices every time, even with overripe, soft tomatoes. Try that with any manual slicer. High-speed reciprocating stainless steel serrated blades cut cleanly with minimum pressure.

Comes complete with stainless steel wash guard for safe cleaning of blade assembly. Easy to clean stainless steel construction. Additional blade and pusher inserts can be purchased separately for greater flexibility.

Note: pusher inserts must match blade assemblies.



Model Number	Description	Product Code	Case Cube F3/M3	Master Case	Case Weight lbs./kgs
ELECTRIC FOOD SLICER (Complete)					
356	With (2) 3/16" Slice blade assemblies (115 V)	35100	1.8/.05	1	25/11.3
356	With (2) 3/16" Slice blade assemblies (230 V) U.S. specifications only.	35000	1.8/.05	1	25/11.3
354	With (2) 1/4" Slice blade assemblies (115 V)	35200	1.8/.05	1	25/11.3
354	With (2) 1/4" Slice blade assemblies (230 V) U.S. specifications only.	35300	1.8/.05	1	25/11.3
358	With (2) 3/8" Slice blade assemblies (115 V)	35400	1.8/.05	1	25/11.3
358	With (2) 3/8" Slice (230 V). U.S. specifications only	35500	1.8/.05	1	25/11.3
Stainless Steel Blade Assembly with Wash Guard					
	3/16" Slice (16)	A553	1	1	
	1/4" Slice (12)	A554	1	1	
	3/8" Slice (8)	A567	1	1	
NEW! Stainless Steel Pusher Assembly with Replaceable Plastic Inserts					
	3/16" Slices	A1500+PI368	1	1	
	1/4" Slices	A1500+PI014	1	1	
	3/8" Slices	A1500+PI368	1	1	
Blades					
	Blade, Package of 8	A539	12	12	
	Blade, Package of 16	A564	16	16	

Note: 230 Volt models listed above are only available for sale in North America. 230 Volt models for use outside North America require additional modifications and are priced separately. Call factory for details.

Note: Damaged or worn standard blade assemblies can be refurbished for \$129.00 net at factory.

More powerful DC motor provides constant torque for even easier slicing!



Slices lemons, limes, oranges, kiwi, fresh mozzarella, etc. You can even julienne cucumber and zucchini.

Electric Food Slicer Model 356

Take a virtual tour of this product at www.edlundco.com. Operating & maintenance video and CD-ROM also available.

Kitchen Equipment/Prep

Both Models Feature:



Each slicer comes complete with 2 blade assemblies with wash guards.



Guard locks over blade cartridge for safe cleaning in dishwasher.



350XL SERIES ELECTRIC SLICER

The new 350XL Series of slicers are designed to handle larger items and more of them. The opening, blade assembly, and pusher are 1 1/2" larger which makes them perfect for slicing cooked chicken breasts for fajitas, caesar salads, or larger beefsteak tomatoes. The new pusher design allows operators to adjust the start cycle for product thickness, while maintaining complete safety.

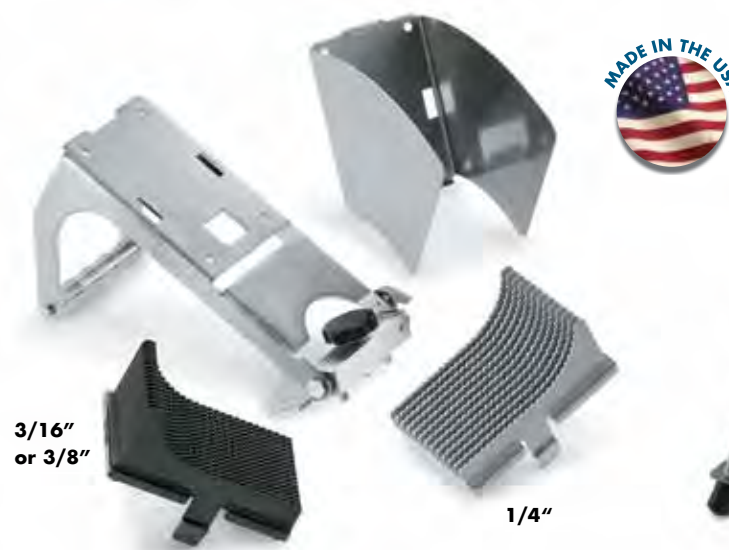
Comes complete with two blade assemblies and two wash guards which eliminate down time.

Model Number	Description	Product Code	Case Cube F3/M3	Master Case	Case Weight lbs./kgs
ELECTRIC FOOD SLICER (Complete)					
356XL	With (2) 3/16" Slice blade assemblies (115 V)	35700	3.4/1.0	1	27/12.2
356XL	With (2) 3/16" Slice blade assemblies (230 V) U.S. specifications only.	35710	3.4/1.0	1	27/12.2
354XL	With (2) 1/4" Slice blade assemblies (115 V)	35800	3.4/1.0	1	27/12.2
354XL	With (2) 1/4" Slice blade assemblies (230 V) U.S. specifications only.	35810	3.4/1.0	1	27/12.2
358XL	With (2) 3/8" Slice blade assemblies (115 V)	35900	3.4/1.0	1	27/12.2
358XL	With (2) 3/8" Slice (230 V). U.S. specifications only	35910	3.4/1.0	1	27/12.2
Blade Assembly with Blades and Wash Guard					
	3/16" Slice (16)	A553L	1	1	
	1/4" Slice (12)	A554L	1	1	
	3/8" Slice (8)	A567L	1	1	
NEW! Stainless Steel XL Pusher Assembly with Replaceable Plastic Inserts					
	3/16" Slices	A1525+PI36L	1	1	
	1/4" Slices	A1525+PI42L	1	1	
	3/8" Slices	A1525+PI36L	1	1	
Blades					
	Blade, Package of 8	A539L	12	12	
	Blade, Package of 16	A564L	16	16	

Note: 230 Volt models listed above are only available for sale in North America. 230 Volt models for use outside North America require additional modifications and are priced separately. Call factory for details.

Note: Damaged or worn XL blade assemblies can be refurbished for \$140.00 net at factory.

All stainless steel longer pusher assembly now with interchangeable plastic pusher cartridges.



3/16" or 3/8"

1/4"



More powerful DC motor provides constant torque for even easier slicing!



Model 356XL

Kitchen Equipment/Prep



401 ELECTRIC KNIFE SHARPENER

Our model 401 is NSF Certified & has a pop-out, easy to clean and replaceable knife guidance system. Electric knife sharpener has a precision guidance system to maintain perfect edge, and ABS plastic knife guide for easier cleaning and ease of operation. Knife guide allows knife heel to be inserted closer to stone to maximize sharpening area. Sharpens knives from 3/8 of an inch to cleaver blades. Grinding wheel assembly is replaceable.

Model Number	Description	Product Code	Case Cube Ft ³ /M ³	Master Case	Case Weight lbs./kgs
401	NSF Electric Knife Sharpener with Removable Guidance System 115 Volt	40000	1.1/.03	3	31/13.9
401	NSF Electric Knife Sharpener with Removable Guidance System 230 Volt (for U.S. specs only)	40200	1.1/.03	3	31/13.9
401	Replacement Grinding Wheel Assembly	A526SSP		1	2/.9



View a demo of this product at www.edlundco.com
Operating & maintenance video and CD-ROM also available.

Exclusive
3-year warranty!



Model 401 shown with Easy-Track Guidance System removed for cleaning, or for replacement of grinding wheel.

Kitchen Equipment/Prep

395 ELECTRIC KNIFE SHARPENER

Model Number	Description	Product Code	Case Cube Ft ³ /M ³	Master Case	Case Weight lbs./kgs
395	Electric Knife Sharpener 115 Volt	39600	1.1/.03	3	31/13.9
395	Electric Knife Sharpener 230 Volt (for U.S. specifications only)	39700	1.1/.03	3	31/13.9
395	Replacement Grinding Wheel Assembly	A526SP		1	2/.9

Our 395 electric knife sharpener provides results similar to a professional knife sharpening service. With new safety features and a precise guidance system built-in, there's no easier way to get professional sharpening results as often as you need them. Now when it comes to controlling kitchen costs, maybe you won't need to sharpen your pencil as much.



395

Griddle Scraper Sharpener

Save time and money with the NEW Edlund Griddle Scraper Sharpener. Stainless steel blades are expensive to replace. Our rugged griddle scraper sharpener helps you keep your blades sharp and in peak performance. Heavy duty suction cups hold the sharpener safely in place while sharpening and lets you store it out of the way simply by sticking to the wall. No more wasted time replacing costly blades. Edlund's Griddle Scraper Sharpener lets you sharpen your griddle skills!

Model Number	Description	Product Code	Case Cube Ft ³ /M ³	Master Case	Case Weight lbs./kgs
GSS-14	Griddle Scraper Sharpener	79010	1.6/.02	1	4.5/2.5



Simply slide your griddle scraper blade along our sharpening file to maximize blade performance

Unique suction-cup design holds the GGS-14 Griddle Scraper Sharpener firmly in place



Shown with scraper.
(Scraper not included)

FEATURES:

- Labor saving – saves time changing blade
- Money saving – get more mileage out of expensive stainless steel blades
- Peak performance – a sharp blade every time you need to clean the griddle evenly and consistently
- Maximize productivity and minimize operator fatigue
- **Made in the USA**

New! Smart Tong Holders™

Our revolutionary new stainless steel Smart Tong Holders™ are the fastest and easiest way to store and access most any size tong while keeping the paddles clean and sanitary in a busy foodservice kitchen. Designed specifically for Edlund stainless steel spring tongs, our wall mounted tong holders automatically locate the tongs in an ergonomic open position within easy reach for quick access and use in the perfect gripping position. Operators who prefer to use locking tongs can also store our 16" locking tongs in the closed position, perfect for turning steaks, fish, and chicken on the grill without the extra step of opening or closing the locking feature. With 6 capacities to choose from, the NEW! Smart Tong Holders from Edlund...are the smartest way to improve your hold on kitchen productivity.



Model STH-6



Model STH-4



Model STH-2

Features:

- Exclusive auto-locating design
- All stainless steel construction
- Six models/capacities to choose from
- Removable wall mount units are dishwasher safe
- Unique storage and access position prevents contamination of the food contact area of the paddle
- **Made in the USA**



Model Number	Description	Product Code	Case Cube F3/M3	Master Case	Case Weight lbs./kgs
STH-1	Smart Tong Hole with 1 unit capacity	36910	.11/.003	1	.80/.37
STH-2	Smart Tong Hole with 2 unit capacity	36920	.11/.003	1	.95/.43
STH-3	Smart Tong Hole with 3 unit capacity	36930	.21/.006	1	1.50/.68
STH-4	Smart Tong Hole with 4 unit capacity	36940	.21/.006	1	1.75/.80
STH-5	Smart Tong Hole with 5 unit capacity	36950	.30/.009	1	2.50/1.14
STH-6	Smart Tong Hole with 6 unit capacity	36960	.30/.009	1	3.00/1.36

Heavy Duty Gripper Tongs

Our multi-purpose heavy duty gripper tongs with our unique flat paddle are ideal for separating frozen burger patties or for a firmer grip on platters. These tongs feature our heavy duty replaceable stainless steel spring and are available with or without our patented locking mechanism. **Made in the U.S.A.**



NEW
7" Tong



NEW
7" Tong



Heavy Duty

Model Number	Description	Product Code	Case Cube F3/M3	Master Case	Case Weight lbs./kgs
6410 HD	10" Heavy Duty Grip Tongs	36010	.13/.004	12	4/1.8
6410 HD	10" Heavy Duty Grip Tongs	36070	.80/.02	72	23/10.4
6412 HD	12" Heavy Duty Grip Tongs	36210	.23/.007	12	5/2.3
6412 HD	12" Heavy Duty Grip Tongs	36270	.80/.02	72	24/10.8
6416 HD	16" Heavy Duty Grip Tongs	36610	.23/.007	12	5.5/2.5
6416 HD	16" Heavy Duty Grip Tongs	36670	1.21/.04	72	25/11.3

Heavy Duty Locking with Edlund's patented locking mechanism

Model Number	Description	Product Code	Case Cube F3/M3	Master Case	Case Weight lbs./kgs
6410 HDL	10" Heavy Duty Grip Tongs with Lock	36011	.13/.004	12	4/1.8
6410 HDL	10" Heavy Duty Grip Tongs with Lock	36071	.80/.02	72	21.4/9.6
6412 HDL	12" Heavy Duty Grip Tongs with Lock	36211	.23/.007	12	5/2.3
6412 HDL	12" Heavy Duty Grip Tongs with Lock	36271	.80/.02	72	24/10.8
6416 HDL	16" Heavy Duty Grip Tongs with Lock	36611	.23/.007	12	5.5/2.5
6416 HDL	16" Heavy Duty Grip Tongs with Lock	36671	1.21/.04	72	33/15

44 Series Heavy Duty Locking Scallop Tongs

Featuring Edlund's patented locking mechanism and heavy duty replaceable stainless steel springs.

Model Number	Description	Product Code	Case Cube F3/M3	Master Case	Case Weight lbs./kgs
4407 HDL	7" Heavy Duty Tongs with Lock	34219	.13/.004	12	2/1
4407 HDL	7" Heavy Duty Tongs with Lock	34279	.80/.02	72	12/5.5
4409 HDL	9" Heavy Duty Tongs with Lock	34611	.13/.004	12	3.5/1.6
4409 HDL	9" Heavy Duty Tongs with Lock	34671	.80/.02	72	22/9.9
4412 HDL	12" Heavy Duty Tongs with Lock	34411	.23/.007	12	4/1.8
4412 HDL	12" Heavy Duty Tongs with Lock	34471	.80/.02	72	25/11.3
4416 HDL	16" Heavy Duty Tongs with Lock	34511	.23/.007	12	5/2.3
4416 HDL	16" Heavy Duty Tongs with Lock	34571	1.21/.04	72	30/13.5

44 Series Heavy Duty Scallop Tongs

Featuring a heavy duty replaceable stainless steel spring that lasts longer than coil springs.

Model Number	Description	Product Code	Case Cube F3/M3	Master Case	Case Weight lbs./kgs
4407 HD	7" Heavy Duty Spring Tongs	34319	.13/.004	12	2/1
4407 HD	7" Heavy Duty Spring Tongs	34379	.80/.02	72	12/5.5
4409 HD	9" Heavy Duty Spring Tongs	34610	.13/.004	12	3.5/1.6
4409 HD	9" Heavy Duty Spring Tongs	34670	.80/.02	72	22/9.9
4412 HD	12" Heavy Duty Spring Tongs	34410	.23/.007	12	4/1.8
4412 HD	12" Heavy Duty Spring Tongs	34470	.80/.02	72	25/11.3
4416 HD	16" Heavy Duty Spring Tongs	34510	.23/.007	12	5/2.3
4416 HD	16" Heavy Duty Spring Tongs	34570	1.21/.04	72	30/13.5

Note: All tongs are sold in dozens or bulk packs of 72

Cold Pan Boxes

Now you can upgrade your front of the house food bars, buffet tables and beverage dispensing areas and keep products cool and safe. Our new CS series cold pan boxes are perfect for creamers, butter pats, lemon wedges and other condiments. Food stays chilled at or below 40°F for up to eight hours without messy ice or electricity. Edlund's stainless steel housing and choice of hinged lids keeps food covered and adds eye appeal while keeping products cold and fresh longer and more sanitary and secure for serving. Inserts freeze for eight hours or overnight before filling with pre-chilled product. Make a cool impression on your customers with Edlund.



Model Number	Description	Product Code	Case Cube Ft3/M3	Master Case	Case Weight lbs./kgs
CSS-16	Stainless steel 1/6 cold pan enclosure with ¾ lid	79410	1.8/.05	6	19/18.5
CSB-016	Stainless steel 1/6 cold pan enclosure with ¾ lid & black insert	79400	1.8/.05	6	33/14.8
CSW-016	Stainless steel 1/6 cold pan enclosure with ¾ lid & white insert	79402	1.8/.05	6	33/14.8
CSR-16	Stainless steel 1/6 cold pan enclosure with hole	79412	1.8/.05	6	19/18.5
CSR-016B	Stainless steel 1/6 cold pan enclosure with hole in lid & black insert	79401	1.8/.05	6	33/14.8
CSR-016W	Stainless steel 1/6 cold pan enclosure with hole in lid & white insert	79411	1.8/.05	6	33/14.8



Lid closed for keeping product chilled and fresh



Durable hinged lid open for serving

Features:

- Ideal for front or back of the house.
- Perfect for iced tea stations or soft serve counters.
- Keeps contents chilled at or below HACCP guidelines of 41°F (4°C) without ice or electricity for up to eight hours.
- Freeze for eight hours or overnight before filling with pre-chilled product.
- Stainless steel housing and hinged lid keeps cold pan inserts covered and secure for serving.

- Sixth-size pan insert in choice of black or white.
- Dishwasher safe insert made of high impact ABS material and filled with non-toxic gel.
- NSF Component Certified.
- **Made in USA**

Time to leave the old grind behind!



Introducing Edvantage® EDVG Series Meat Grinders, because “cooler” is better!

Our hot new design is really “cool”, not just looks wise, but because its large fan-cooled motor keeps it running cooler longer than competitive models, for better overall performance. And because all the grinding is done externally, there’s no wormhole to clean out or concerns about internal leakage. Add our bright blue safety light, unique storage drawer for spare parts, and our exclusive Edvantage® 2-year warranty, and you’ve got real innovation. If you’re burned out from the same old grind, leave it behind and gain the Edvantage®! To learn more, go to edlundco.com and download our Meat Grinder brochure.



Edlund Company LLC, 319 Queen City Park Road, Burlington, VT 05401, USA 800-772-2126 www.edlundco.com An ISO 9001:2015 certified company

Kitchen Equipment Sanitation & Storage



At Edlund, we continually invest in quality. The new state-of-the-art laser cutter shown above ensures each and every component we produce is precision engineered to meet the industry's most exacting standards.



Kitchen Equipment/Sanitation & Storage

Helios™ UV Antimicrobial* Knife Cabinet

Our new KSUV-18 Antimicrobial* Knife Cabinet provides superior performance as compared to other methods or products using magnetic bars or metal racks to secure the knives. During operation, our exclusive non-filtering clear slotted knife holder and special mirrored interior walls eliminate shadows on knife surfaces within the cabinet, making an important contribution to reducing microbial contamination. The easy-to-operate mechanical timer can be set for up to 15 minutes, however the KSUV-18 will provide a 99% reduction in E-Coli bacteria in as little as 5 minutes.

Model Number	Description	Product Code	Case Cube Ft ³ /M ³	Master Case	Case Weight lbs./kgs
KSUV-18	UV ANTIMICROBIAL* KNIFE/UTENSIL CABINET (115 Volt)	39150	4.30/0.11	1	30/13.7
UVKR-18	Replacement Holding Rack	UV006	NA		NA



Awarded
U.S. Patent # 9,339,570

Note: Knives not included

Features:

- Includes NSF Certified Component knife rack model UVKR-18
- 15 minute belled timer
- Rack holds up to 12 knives plus steel separated for complete knife surface coverage
- 2 Larger slots to accommodate cleavers
- Stainless steel construction
- LED lights indicate when door is closed and antimicrobial* reduction is in process
- UV filtered plexiglass door with lockable keyed handle
- Exclusive non UV filtering slotted knife holder
- Assembled in U.S.A.
- 115 volts
- Safety interlock door

EPA Establishment 101161-VT-1

Dimensions: Width 19" (483mm)
Height 24" (610mm)
Depth 6" (150mm)

* Independent Laboratory Tests showed a 99% reduction in E-Coli bacteria in as little as 5 minutes



For model UVKR-18 included knife rack only

Filtered plexiglass door protects operator from UV rays while allowing full view of knives inside

Knife holder can accommodate 12 knives or 10 knives and 2 cleavers plus one steel



Exclusive non UV filtering knife holder and mirrored interior walls eliminate shadows on knife surfaces during operation.



Keyed lockable handle provides added security

Kitchen Equipment/Sanitation & Storage



KNIFE SANITIZING SYSTEMS

An Edlund exclusive! Our KSS-5050 knife sanitizing system provides a complete method of liquid sanitizing, air drying, and storage of knives. The liquid sanitizing tank allows for submersion of the entire blade, thus ensuring complete sanitizing. The built-in KR-50R knife rack provides the facility for air drying and safe storage of knives. The stainless steel back plate provides a secure mounting method to a wall stud.

The KSR-5000 liquid sanitizing rack is convenient for those operators already using Edlund wall mounted knife racks.

New Product Features:

- NSF Certified
- Fully enclosed in stainless steel for increased sanitation
- Optional drainage tube
- Removable inserts and tank for easy cleaning
- **Made in USA**

Model Number	Description	Product Code	Case Cube Ft3/M3	Master Case	Case Weight lbs./kgs
KSS-5050 DT	Knife sanitizing system with easy drain tube	39051	2.4/.07	1	14/6.4
KSS-5050	Knife sanitizing system	39050	2.4/.07	1	14/6.4
KSR-5000	Knife sanitizing rack	39000	1.1/.03	1	6/2.7



KSR-5000 Knife Sanitizing Rack



KSS-5050 DT Knife Sanitizing System

Shown with optional drainage tube.

60 seconds of contact with liquid fully sanitizes knives. Call for details.



Knife Sanitizer comes apart for easy cleaning.

Kitchen Equipment/Sanitation & Storage



KNIFE RACKS

Edlund introduces our **exclusive** line of knife racks with the unique v-slot insert design. Now holds almost double the amount of chef's knives as previous models plus room for smaller knives, a cleaver, steel and even scissors all in the same space as before. NSF Component Certified inserts and dishwasher safe!

KR-698, 699 700 Features:

- One knife rack that does it all
- Removeable inserts
- Holds 8 chef's knives, plus 2 smaller knives, 1 steel and scissors in the same space as previous model
- Insert is dishwasher safe and will not dull knives
- Stainless steel is corrosion resistant
- Knife rack skirt (models KR-699 and KR-700) protects the knives and operators from accidents
- KR-700 has stainless steel back for increased sanitation
- Exclusive v-slot design holds knives upright and more securely
- **Made in USA**



Model KR-698



Our exclusive insert holds up to 10 chef's knives plus scissors!

Model Number	Description	Product Code	Case Cube Ft3/M3	Master Case	Case Weight lbs./kgs
KR-700	Knife Rack with 14" skirt and stainless steel back plate	39920	1.3/.04	3	12/5.4
KR-699	Knife Rack with 12" skirt and open back	39915	1.3/.04	3	10/4.5
KR-698	Knife Rack with short skirt for easy knife selection	39550	.2/.01	1	1/.45
	Knife Rack Insert for KR-698, 699, 700	I013N		1	1/.45



Models KR-700 & KR-699 (Front)



Models KR-700 & KR-699 (Back)

LOCKING KNIFE CABINET

Our **KLC-994 locking knife cabinet** has all the features of custom fabricated units and comes complete with an Edlund KR-99 Knife Rack already mounted inside. The extra heavy duty stainless steel cabinet has a keyed locking handle and features three integral padlock holes for extra secure storage. The unique top hinge design eliminates any chance of access when closed, and the front view window permits immediate knife inspection. Ideal for prison kitchens, schools, and hospitals or wherever secure knife storage is necessary. NSF Component Certified! Put a lock on knife loss with Edlund!

Model Number	Description	Product Code	Case Cube Ft3/M3	Master Case	Case Weight lbs./kgs
KLC994	Locking Knife Cabinet with keyed locking handle	39300	2.64/.075	1	25.3/11.5



Kitchen Equipment/Sanitation & Storage

STAINLESS KNIFE BLOCKS

Our beautiful KBS-2002 and KBS-2006 provide a safe and sanitary way to store a multitude of knives, right on the countertop for immediate access. The open slot design allows positioning of knives where they are most convenient. The extra thick insert is removable and washable, and the unique steel slot accepts regular and diamond steels or an additional 1 1/4 inch knife.

Features:

- Dishwasher safe
- NSF Component Certified
- Choice of 9" or 12" high models
- Stainless steel housing and base
- **Made in USA**
- Rubber foot pads provide extra grip and prevent scratches on countertops

Model Number	Description	Product Code	Case Cube Ft3/M3	Master Case	Case Weight lbs./kgs
KBS-2002	12" Stainless Knife Block	39200	1.1/.03	1	7/3.2
KBS-2006	9" Stainless Knife Block	39255	1.1/.03	1	7/3.2



KBS-2002
12" high model



KBS-2006
9" high model fits perfectly under kitchen cabinets



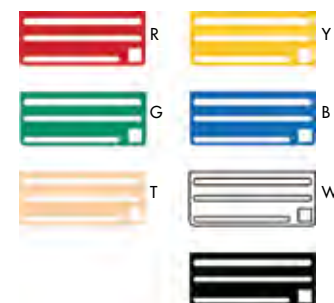
Insert holds up to 6 chef's knives.



KR-50

KR-50B

Inserts available in colors below



KR-50 COLOR-CODED KNIFE RACKS

Now operators can fully integrate their knife usage/storage into their HACCP program with our KR-50 color-coded knife racks. NSF Component Certified, dishwasher safe and replaceable colored inserts provide the ultimate solution in knife handling and storage.

Features:

- NSF Component Certified
- Fully enclosed in stainless steel for increased sanitation
- Smaller knife rack with 12" skirt holds 1 cleaver and 4 chef knives or 6 chef knives or 8 slicers or 12 paring knives and 1 round or diamond steel
- **Made in USA**

Model Number	Description	Product Code	Case Cube Ft3/M3	Master Case	Case Weight lbs./kgs
KR-50	Knife rack with black insert 12" skirt and stainless steel back plate	39400	1.3/.04	6	18/8.1
	Knife rack insert for KR-50	1068		1	1/.45
KR-50R	Knife rack with red insert 12" skirt and stainless steel back plate	39401	1.3/.04	6	18/8.1
KR-50Y	Knife rack with yellow insert 12" skirt and stainless steel back plate	39402	1.3/.04	6	18/8.1
KR-50G	Knife rack with green insert 12" skirt and stainless steel back plate	39403	1.3/.04	6	18/8.1
KR-50B	Knife rack with blue insert 12" skirt and stainless steel back plate	39404	1.3/.04	6	18/8.1
KR-50T	Knife rack with tan insert 12" skirt and stainless steel back plate	39406	1.3/.04	6	18/8.1
KR-50W	Knife rack with white insert 12" skirt and stainless steel back plate	39407	1.3/.04	6	18/8.1
KR-50A	Master pack of 1 each red, yellow, green, blue, tan and white knife racks	39408-6	1.3/.04	6	18/8.1
KR-50I	Master pack of 1 each red, yellow, green, blue, tan and white knife racks inserts only	10688-6	.2/.01	1	6/2.7

Kitchen Equipment/Sanitation & Storage

Film and Foil Dispenser

SANITARY AND PROFESSIONAL

- Heavy duty stainless steel construction
- NSF Certified
- Dispenses and cuts clean both 12" & 18" film and foil
- Optional wall mounting bracket available
- Interchangeable foil and film cutters included
- **Made in the USA**



Our Heavy Duty Film and Foil Dispenser replaces those flimsy cardboard cartons that hold rolls of film and foil, and those plastic dispensers that don't work so well when the roll is near the end. Edlund's FFD-18 is a sturdy stainless steel dispenser with suction cup feet that hold it securely in position or you can mount it on the wall and save precious counter space. Welded handles make it easy to carry when loaded with a full roll, and the adjustable dispensing tube fits both 12" and 18" rolls. Whether you're using the slide cutter for film or the interchangeable metal cutter for foil, you get a clean cut that eliminates waste and saves you money! Don't let inferior dispensers foil your profit plans. Edlund is a cut above.

Model Number	Description	Product Code	Case Cube Ft3/M3	Master Case	Case Weight lbs./kgs
FFD-18	12" & 18" Foil & film dispenser.	79500	1/.03	1	9.5/4.25
FFD-WMB	Wall Mounting Bracket	A1060			
	18" Replacement Film Cutter	C567			
	18" Replacement Foil Cutter	C566			



Film dispenser with slide cutter



Foil dispenser with metal cutting edge



12" Film roll shown



12" Foil roll shown

Drop-In Open Top Film and Foil Dispensers

Our Drop-in film and foil dispensers are an easy and economical way to store and dispense different size rolls of film and foil, while keeping the box secure and dry. The open top design allows easy loading and removal of the film or foil box, and the suction cup feet hold the dispenser firmly in place on the counter. Heavy duty stainless steel construction helps ensure 100% product usage every time.

The film dispensers are individually designed to hold 2000 ft. rolls in 12", 18", and 24" widths, and the foil dispenser holds a 1000 ft. roll of 18" wide foil. Slide cutters for film or Edlund's Safety-edge metal cutter for foil are included with each unit. Start cutting film and foil costs now with Edlund.

Model Number	Description	Product Code	Case Cube Ft3/M3	Master Case	Case Weight lbs./kgs
OFD-12	12" Film Dispenser with Slide Cutter, 2000 ft.	79540	1/.03	1	9.5/4.25
	12" Replacement Film Cutter	C816			
OFD-18	18" Film Dispenser with Slide Cutter, 2000 ft.	79560	1/.03	1	9.5/4.25
	18" Replacement Film Cutter	C567			
OFLD-18	18" Foil Dispenser with Metal Cutter, 1000 ft.	79570	1/.03	1	9.5/4.25
	18" Replacement Foil Cutter	C566			
OFD-24	24" Film Dispenser with Slide Cutter, 2000 ft.	79580	1/.03	1	9.5/4.25
	24" Replacement Film Cutter	C577			



24" Film dispenser with slide cutter



18" Film dispenser with slide cutter



18" Foil dispenser with safety edge metal cutter



12" Film dispenser with slide cutter

Scales



With a best-in-the-business warranty, Edlund scales are renowned for quality and precision. They're also a source of great pride for the company. Here, a worker carefully hand tests and calibrates a Five Star scale in our U.S. manufacturing facility. Edlund mechanical scales are the only foodservice scales still manufactured in the U.S.A.



Distributors, Consultants, Operators and Broadliners have voted Edlund scales Best In Class as featured in FE&S Magazine for 14 years.

THE IMPORTANCE OF PORTION CONTROL

Edlund Company is the only Foodservice scale company that still manufactures many of its products in the USA. We know the importance of maintaining accuracy to ensure profitability. That's why we manufacture many of our scales to be dishwasher safe with stainless steel mechanisms, including the springs, not just the scale housing. After all, it's the mechanism that does the work! High heat, humidity and steam, salt air, airborne grease and other factors in a busy kitchen can quickly ruin your scale mechanism, which can cause inaccurate readings and lost profits for you.

We also understand that time is important to you. Our air dashpot feature saves you time with faster readings. That's also why we make many of our scales field recalibratable so you don't waste time worrying whether your scale is accurate. Any scale can lose calibration. Our calibration kits keep your scales accurate and your portion costs in line.

With many different capacities and features to choose from, including NSF Certification and field recalibration,* Edlund has the right scale for you. Sure, they cost more, they should. If you don't have an Edlund scale you're probably losing money.

The following chart shows examples of protein costs broken down into common protein sizes and the loss factor that could result from using cheap, inaccurate scales. It is easy to see how quickly profits are lost, but more importantly, you can see how quickly an accurate, dependable scale pays for itself many times over.

Cost Per Pound	1/8 oz.	1/4 oz.	1/2 oz.	3/4 oz.	1 oz.	2 oz.	4 oz.	8 oz.
Loss Factor	0.0079	0.0157	0.0313	0.047	0.0625	0.125	0.25	0.5
\$2.00	\$0.016	\$0.031	\$0.063	\$0.094	\$0.125	\$0.250	\$0.500	\$1.000
\$6.00	\$0.047	\$0.094	\$0.188	\$0.282	\$0.375	\$0.750	\$1.500	\$3.000
\$10.00	\$0.079	\$0.157	\$0.313	\$0.470	\$0.625	\$1.250	\$2.500	\$5.000
\$18.00	\$0.142	\$0.283	\$0.563	\$0.846	\$1.125	\$2.250	\$4.500	\$9.000

If your protein (veal, cheese, pork, beef, fish, etc.) costs \$2.00 per pound and your scale is off 1/4 ounce, you lose 3.1 cents every time you serve a portion.

30 portions per day = \$.93 per day x
 6 days per week = \$5.58 per week x
 52 weeks = \$290.16 per year
 A three year period = \$870.48

If your protein costs \$10.00 per pound and your scale is off 3/4 ounce, you lose 47 cents per portion served.

30 portions per day = \$14.10 per day x
 6 days per week = \$84.60 per week x
 52 weeks = \$4,399.20 per year
 A three year figure = \$13,197.60

If your protein costs \$6.00 per pound and your scale is off 1/8 ounce, you lose 4.7 cents per portion served.

30 portions per day = \$1.41 per day x
 6 days per week = \$8.46 per week x
 52 weeks = \$439.92 per year
 A three year figure = \$1,319.76

If your protein costs \$18.00 per pound and your scale is off 1/2 ounce, you lose 56.3 cents per portion served.

30 portions per day = \$16.89 per day x
 6 days per week = \$101.34 per week x
 52 weeks = \$5,269.68 per year
 A three year figure = \$15,809.04

The one, two, four and eight ounce figures reflect a receiving loss if scales are not accurate.

*Note: Not available on all models. Please check with factory for models and capacities with this feature.

NEW! Wireless Pizza Scales



NEW! EDPZ-20 WIRELESS DIGITAL PIZZA/SPECIALTY SCALE

Now you can have the scale you've always needed, the weigh you've always wanted, with plug and play options that put you in control. With the first and only pizza/specialty scales utilizing Bluetooth® connectivity, you can eliminate the cord altogether! Need programmability for different menu items? The Edvantage® EDPZ-20 will do the job. And with the extra-large bright red LED display, you can see the readout across the room! You can even add options later as you need them. Whatever configuration you choose, you'll get the accuracy, speed, and durability you expect from the Edlund brand. The wait is finally over!

Features:

- Bluetooth wireless scale
- Plug and Play Operation
- Uses 8AA and 2AAA batteries (included)
- UL/CUL/CE approved USB power supply included
- NSF Approved
- 20 lb. X 0.05oz capacity
- 10" x 10" removeable stainless steel platform
- Optional 12" X 12" stainless platform
- 4 button operation (On/Off, Tare, Zero, Mode/Cal)
- 10 Quick set programmable memory buttons
- Large Red LED Display (4.5" X 1.75")
- Over/Under/Accept Feature with LED lights
- Auto-off feature
- Field re-calibratable
- ClearShield™ protective cover included
- Optional Tare button and footswitch
- Wall mount bracket included
- Not legal for trade
- Designed in the U.S.A.



14 Times



NEW! Wireless Pizza Scales



Edvantage® programmable wireless display shown with optional 12" X 12" platform



Low profile base shown with optional stainless steel front tare switch

Plug and Play options shown with quick disconnect cords for wired usage and/or accessories



Optional quick disconnect foot tare switch



Optional quick mount stainless steel front tare button

Model Number	Description	Product Code	Case Cube Ft3/M3	Master Case	Case Weight lbs./kgs
EDPZ-20	WIRELESS PIZZA SCALE 10"X10" STD PLATFORM	59200	3.62/.103	3	36 LBS/16.4
	TARE BUTTON (ACCESSORY SPARE PART)	TB250SP	.09/.003	1	1 LB/.45 KG
	OVER SIZE PLATFORM 12"X12"	PL250	.09/.003	1	3 LBS/1.36 KG
	FOOT SWITCH (ACCESSORY SPARE PART)	A1027SP	.09/.002	1	1 LB/.45 KG

NEW! Wireless Pizza Scales



Bluetooth®

Awarded
U.S. Patent # 11,408,762 B2

NEW! BBPZ-20 WIRELESS DIGITAL PIZZA/SPECIALTY SCALE

Now you can have the scale you've always needed, the weigh you've always wanted, with plug and play options that put you in control. With the first and only pizza/specialty scales utilizing Bluetooth® connectivity, you can eliminate the cord altogether! The new Bravo!™ BBPZ-20 gives you the choice of a 10" or 12" platform with just two buttons. And with the extra-large bright red LED display, you can see the readout across the room! You can even add options later as you need them. Whatever configuration you choose, you'll get the accuracy, speed, and durability you expect from the Edlund brand. The wait is finally over!

Features:

- Bluetooth wireless scale
- Plug and Play Operation
- Uses 8AA and 2AAA batteries (included)
- UL/CUL/CE approved USB power supply included
- NSF Approved
- 20 lb. X 0.05oz capacity
- 10" x 10" removeable stainless steel platform
- Optional 12" X 12" stainless platform
- Simple 2 button operation (On/Off, Tare, Mode/Cal)
- Large Red LED Display (4.5" X 1.75")
- Auto-off feature
- Field re-calibratable
- ClearShield™ protective cover included
- Optional Tare button and footswitch
- Wall mount bracket included
- Not legal for trade
- Designed in the U.S.A.



14 Times



NEW! Wireless Pizza Scales



Bluetooth®

Bravo!™ 2 button wireless display shown with 10" X 10" platform



BRAVO!™ 2 button model shown with USB plug and play power cords



Optional quick disconnect foot tare switch



Low profile base shown with optional stainless steel front tare switch



Optional quick mount stainless steel front tare button

Model Number	Description	Product Code	Case Cube Ft3/M3	Master Case	Case Weight lbs./kgs
BBPZ-20	WIRELESS PIZZA SCALE 10"X10" STD PLATFORM	59100	3.62/.103	3	36 LBS/16.4
	TARE BUTTON (ACCESSORY SPARE PART)	TB250SP	.09/.003	1	1 LB/.45 KG
	OVER SIZE PLATFORM 12"X12"	PL250	.09/.003	1	3 LBS/1.36 KG
	FOOT SWITCH (ACCESSORY SPARE PART)	A1027SP	.09/.002	1	1 LB/.45 KG

High Profile™ Digital Scales



Awarded
U.S. Patent # 11,408,762 B2



14 Times



NEW! EHP-30 High Profile™ Waterproof Stainless Digital Scale

Edlund takes portion scales to new heights with our Patent Pending, EHP-30 High Profile Portion/Light Receiving scale. It's IP67 rated waterproof and submersible, has a 30lb. x 0.1oz capacity with 7 measurement options including fluid ounces and milliliters, an easy to read 1.75" LED display, 10 programmable memory buttons, and color coded over/under indicators to verify your portions are accurate. Plus, the built-in carrying handles provide secure transport anywhere and any weigh. Raise the profile of your operation with the New Edlund EHP-30.

Features:

- Display options (30lb x 0.1oz, 480oz x 0.1oz, 480oz x 1/8oz, 15000g x 2g, 30lb x 0.005lb, 480fl.oz x 0.1fl.oz, 15000ml x 2ml)
- Large 7 Segment RED LED display (4.5" x 1.75")
- IP 67 Rating Waterproof and submersible
- 3 color indicators (Red/Green/Yellow) for Over/Accept/Under feature
- 10 (RGB) LED'S surrounding display for Over/Accept/Under feature. Over function flashe
- 10 Quick set memory buttons (M0~M9)
- 4 Easy to use buttons (on/tare, mode/calibrate, zero, off)
- NSF Certified
- UL/CUL/CE approved dual voltage power supply (110VAC ~240VAC 50-60HZ) or 8 AA batteries (Batteries included)
- Auto-shut-off feature
- Extra-large 9.64" x 8.71" removeable stainless steel platform for easy cleaning
- Built in carrying handles
- Side mounted power jack with plug to help prevent power supply breakage
- Field re-calibratable
- Not legal for trade
- Designed by Edlund engineers and built exclusively for Edlund
- Patent Pending

High Profile™ Digital Scales

Adds an impressive profile to any kitchen!



Waterproof and submersible for easy clean up



Built in carrying handles for secure transport



Perfect for light receiving up to 30lbs.



Accurately weighs fluid oz. and milliliters



Perfect for weighing items in the walk-in (operating temperature 32-104°F)

Display Options

- 30lb x 0.1oz
- 480oz x 0.1oz
- 480oz x 1/8oz
- 15000g x 2g
- 30lb x 0.005lb
- 480fl.oz x 0.1fl.oz
- 15000ml x 2ml

3 color LEDs light to indicate Over/Accept/Under feature



Under, lights are yellow



Accept, lights are green



Over, lights flash red

EHP-30 High-Profile™ Portion & Light Receiving scale



14 Times



Model Number	Description	Product Code	Case Cube Ft3/M3	Master Case	Case Weight lbs./kgs
EHP-30	HIGH PROFILE PORTION/LIGHT RECEIVING SCALE	58600	4.4/.125	4	40/18.25
EHP-30U	SCALE WITH UNIVERSAL POWER SUPPLY	58601	4.4/.125	4	40/18.25



Awarded
U.S. Patent # 11,408,762 B2



14 Times



NEW! BRV-HP30 High Profile Digital Scale with ClearShield™

Introducing our new addition to the exciting BRAVO!™ digital scale line from Edlund. Our BRV-HP30 model takes electronic portion/light receiving scales to new heights with more features and functions than competitive products, like 5 display options, extra-large LED readouts, 10 programmable memory buttons, almost 10" x 9" removable stainless steel platform, and built-in carrying handles for secure transport around the kitchen. It's great for weighing items in the walk-in, and its 3 color LED indicator lights let you know immediately if your portion sizes are correct, over, or under their target weights. Its IP54 rating provides splash proof protection and our exclusive ClearShield™ protective cover provides added protection and easy clean-up. **With all these features, the BRV-HP30 will have you shouting BRAVO!™ every day!**

Features:

- Display options (30lb x 0.1oz, 480oz x 0.1oz, 480oz x 1/8oz, 15000g x 2g, 30lb x 0.005lb)
- Large 7 Segment RED LED display (4.5" x 1.75")
- IP 54 Rating Splash-proof
- Exclusive ClearShield™ cover protects display and scale housing from liquid damage
- 3 color indicators (Red/Green/Yellow) for Over/Accept/Under feature
- 10 (RGB) LED'S surrounding display for Over/Accept/Under feature. Over function flashes
- 10 Quick set memory buttons (M0~M9)
- 4 Easy to use buttons (on/tare, mode/calibrate, zero, off)
- NSF Certified
- UL/CUL/CE approved dual voltage power supply (110VAC~240VAC 50-60HZ) or 8 AA batteries (Batteries included)
- Side mounted power jack with plug protects internal components from moisture damage
- Auto-shut-off feature
- Extra-large 9.64" x 8.71" removeable stainless steel platform for easy cleaning
- Perfect for weighing items in the walk-in (operating temperature 32-104°F)
- Built in carrying handles
- Field re-calibratable
- Not legal for trade
- Designed by Edlund engineers and built exclusively for Edlund
- Patent Pending

The Clear Choice in a High-Profile™ design!



ClearShield™ Protective Cover allows for easy clean up



Built in carrying handles for secure transport

Stainless Steel Platform



ClearShield™ Protective Cover

BRV-HP30 High Profile Portion & Light Receiving scale

Display Options

- 30lb x 0.1oz
- 480oz x 0.1oz
- 480oz x 1/8oz
- 15000g x 2g
- 30lb x 0.005lb

3 color LEDs light to indicate Over/Accept/Under feature



Under, lights are yellow



Accept, lights are green

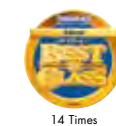


Over, lights flash red



30lb Capacity

Perfect for light receiving up to 30lbs.



14 Times



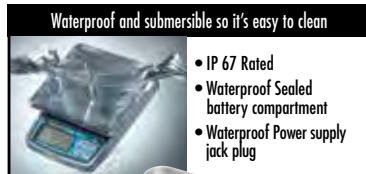
Model Number	Description	Product Code	Case Cube F3/M3	Master Case	Case Weight lbs./kgs
BRV-HP30	HIGH PROFILE PORTION/LIGHT RECEIVING SCALE	58500	4.4/.125	4	40/18.25
BRV-HP30U	SCALE WITH UNIVERSAL POWER SUPPLY	58501	4.4/.125	4	40/18.25

Submersible & Waterproof Stainless Digital Scale



14 Times

BRV-160W SUBMERSIBLE WATERPROOF DIGITAL PORTION SCALE



Waterproof and submersible so it's easy to clean

- IP 67 Rated
- Waterproof Sealed battery compartment
- Waterproof Power supply jack plug



BRV-160W Submersible Waterproof Digital Scale



NEW Waterproof screw-down battery cover

Our BRAVO!™ BRV Series Digital Portion Scales set the new standard in affordably priced, high performance scales for Foodservice. This new stainless steel, waterproof version is completely submersible, with an IP 67 rating, and features a larger, oversized platform as standard, allowing greater flexibility and weighing options. The sealed electronic components are protected from damaging grease, dust, and other contaminants, assuring accurate portion weights and a longer scale life. BRAVO!™

Features:

- Model BRV-160W display options include: 10lb x 0.05oz/160oz x 0.05oz/160oz x 1/8oz/5000g x 1g/10lb x 0.002lb/160 fl.oz x 0.05 fl.oz/5000ml x 1ml
- Other BRAVO!™ models and capacities available
- Field recalibratable (optional calibration weight available)
- Easy to use buttons include on/tare, mode/calibrate, zero, and off
- Larger, easy-to-read LCD display
- BRV - 160W features larger 5.65" x 6.9" removable stainless steel platform for weighing larger items versus competitive models
- Auto-Shut-Off feature
- UL/CUL/CE approved dual voltage AC power supply or works with 2 AA batteries (batteries not included)
- Side mounted power jack helps eliminate broken power supplies
- Power jack plug eliminates internal corrosion when used with batteries
- NSF Certified
- 1 Year Warranty
- Not legal for trade
- Designed by Edlund engineers and built exclusively for Edlund Bravo! Series



Model Number	Description	Product Code	Case Cube Ft3/M3	Master Case	Case Weight lbs./kgs
BRV-160W	BRAVO 10lb Waterproof Stanles Digital Scale	58150	1.5/.05	4	13.56/6.08

Digital Scales with exclusive ClearShield™ Protective Covers



14 Times

BRV-160 OP DIGITAL PORTION SCALE



BRV-160 OP Digital Scale



NEW improved screw-down battery cover

Our BRAVO!™ BRV Series Digital Portion Scales set the new standard in affordably priced, high performance scales for Foodservice. With our new, Exclusive, ClearShield™ Protective Cover feature, your scale can stand up to most any task while being protected from damaging grease, dust, and excess juices, which can cause corrosion. BRAVO!™

Features:

- Model BRV-160 OP Display options include: 160oz x 0.05oz, 160oz x 1/8oz, 10lb x 0.05oz, and 5000g x 1g
- Exclusive ClearShield™ Protective Covers keep juices, grease and other food products off scale and display, keeping scale looking newer, longer.
- Replacement ClearShield™ Protective Covers available in convenient 3 packs (Note: ClearShields will only fit Edlund BRAVO! Scales)
- Other models and capacities available
- Field recalibratable (optional calibration weight available)
- Easy to use buttons include on/tare, mode/calibrate, zero, and off
- Larger, Easy-to-read LCD display
- BRV-160 OP model features oversize 5.65" X 6.9" removable stainless steel platform for weighing larger items versus standard model
- Auto-Shut-Off Feature
- UL/CUL/CE approved dual voltage AC Power supply or works with 2 AA batteries (Batteries not included)
- Side Mounted Power Jack helps eliminate broken power supplies
- Power jack plug eliminates internal corrosion when used with batteries
- NSF Certified.
- 1 Year Warranty
- Not legal for trade



Model Number	Description	Product Code	Case Cube Ft3/M3	Master Case	Case Weight lbs./kgs
BRV-160 OP	BRAVO 10lb Digital Scale with ClearShield™ Protective Cover	58120	1.0/.35	4	11/5.0
	ClearShield™ Protective Cover - 3 pack	CV073		1	

Digital Scales with exclusive ClearShield™ Protective Covers



14 Times

BRV-160 DIGITAL PORTION SCALE

Bravo Scale with Exclusive ClearShield™ Protective Cover™



BRV-160 Digital Scale

Our BRAVO!™ BRV Series Digital Portion Scales set the new standard in affordably priced, high performance scales for Foodservice. With our new, Exclusive, ClearShield™ Protective Cover feature, your scale can stand up to most any task while being protected from damaging grease, dust, and excess juices, which can cause corrosion. BRAVO!™

Features:

- Model BRV-160 Display options include: 10lb x 0.1oz/160oz x 0.1oz/160oz x 1/8oz/5000g x 1g
- Exclusive ClearShield™ Protective Covers keep juices, grease and other food products off scale and display, keeping scale looking newer, longer
- Replacement ClearShield™ Protective Covers available in convenient 3 packs (Note: ClearShields will only fit Edlund BRAVO! Scales)
- Other models and capacities available
- Field recalibratable (optional calibration weight available)
- Easy to use buttons include on/tare, mode/calibrate, zero, and off
- Larger, Easy-to-read LCD display
- Removable stainless steel platform for easy cleaning
- Auto-Shut-Off Feature
- UL/CUL/CE approved dual voltage AC Power supply or works with 2 AA batteries (batteries not included)
- Side Mounted Power Jack helps eliminate broken power supplies
- Power jack plug eliminates internal corrosion when used with batteries
- NSF Certified
- 1 Year Warranty
- Not legal for trade



Model Number	Description	Product Code	Case Cube F3/M3	Master Case	Case Weight lbs./kgs
BRV-160	BRAVO 10lb Digital Scale with ClearShield™ Protective Cover	58100	1.0/.35	4	11/5.0
	ClearShield™ Protective Cover - 3 pack	CV073		1	



NEW improved screw-down battery cover

Digital Scales with exclusive ClearShield™ Protective Covers



14 Times

BRV-320 DIGITAL PORTION SCALE

Bravo Scale with Exclusive ClearShield™ Protective Cover™



BRV-320 Digital Scale

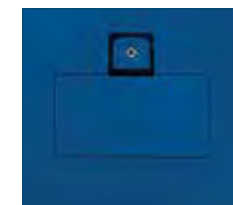
Our BRAVO!™ BRV Series Digital Portion Scales set the new standard in affordably priced, high performance scales for Foodservice. With our new, Exclusive, ClearShield™ Protective Cover feature, your scale can stand up to most any task while being protected from damaging grease, dust, and excess juices, which can cause corrosion. BRAVO!™

Features:

- Model BRV-320 Display options include: 20lb x 0.1oz/320oz x 0.1oz/320oz x 1/8oz/10000g x 2g
- Exclusive ClearShield™ Protective Covers keep juices, grease and other food products off scale and display, keeping scale looking newer, longer
- Replacement ClearShield™ Protective Covers available in convenient 3 packs (Note: ClearShields will only fit Edlund BRAVO! Scales)
- Other models and capacities available
- Field recalibratable (optional calibration weight available)
- Easy to use buttons include on/tare, mode/calibrate, zero, and off
- Larger, Easy-to-read LCD display
- Removable stainless steel platform for easy cleaning
- Auto-Shut-Off Feature
- UL/CUL/CE approved dual voltage AC Power supply or works with 2 AA batteries (batteries not included)
- Side Mounted Power Jack helps eliminate broken power supplies
- Power jack plug eliminates internal corrosion when used with batteries
- NSF Certified
- 1 Year Warranty
- Not legal for trade



Model Number	Description	Product Code	Case Cube F3/M3	Master Case	Case Weight lbs./kgs
BRV-320	BRAVO 20lb Digital Scale with ClearShield™ Protective Cover	58200	2.1/7.0	4	18/8.0
	ClearShield™ Protective Cover - 3 pack	CV074		1	



NEW improved screw-down battery cover

Digital Scales with exclusive ClearShield™ Protective Covers



14 Times

BRV-480 DIGITAL PORTION SCALE

Our BRAVO!™ BRV Series Digital Portion Scales set the new standard in affordably priced, high performance scales for Foodservice. With our new, Exclusive, ClearShield™ Protective Cover feature, your scale can stand up to most any task while being protected from damaging grease, dust, and excess juices, which can cause corrosion. BRAVO!™

Features:

- Model BRV-480 Display options include: 30lb x 0.2oz/480oz x 0.2oz/480oz x 1/4oz/15000g x 5g
- Exclusive ClearShield™ Protective Covers keep juices, grease and other food products off scale and display, keeping scale looking newer, longer
- Replacement ClearShield™ Protective Covers available in convenient 3 packs (Note: ClearShields will only fit Edlund BRAVO! Scales)
- Other models and capacities available
- Field recalibratable (optional calibration weight available)
- Easy to use buttons include on/tare, mode/calibrate, zero, and off
- Larger, Easy-to-read LCD display
- Removable stainless steel platform for easy cleaning
- Auto-Shut-Off Feature
- UL/CUL/CE approved dual voltage AC Power supply or works with 2 AA batteries (batteries not included)
- Side Mounted Power Jack helps eliminate broken power supplies
- Power jack plug eliminates internal corrosion when used with batteries
- NSF Certified
- 1 Year Warranty
- Not legal for trade



Model Number	Description	Product Code	Case Cube Ft3/M3	Master Case	Case Weight lbs./kgs
BRV-480	BRAVO 30lb Digital Scale with ClearShield™ Protective Cover	58300	3.3/1.0	4	26/11.7
	ClearShield™ Protective Cover - 3 pack	CV075		1	

Bravo Scale with Exclusive ClearShield™ Protective Cover



Stainless Steel Platform
Inner Platform
ClearShield™ Protective Cover
Scale



BRV-480 Digital Scale



NEW improved screw-down battery cover

Digital Scales with exclusive ClearShield™ Protective Covers



14 Times

BRVS-10 STAINLESS STEEL DIGITAL PORTION SCALE

Our BRAVO!™ BRV Series Stainless Steel Digital Portion Scales set the new standard in affordably priced, high performance scales for Foodservice. With our new, Exclusive, ClearShield™ Protective Cover feature, your scale can stand up to most any task while being protected from damaging grease, dust, and excess juices, which can cause corrosion. BRAVO!™

Features:

- Model BRVS-10 Display options include: 10lb x 0.1oz /5000g x 2g
- Exclusive ClearShield™ Protective Covers keep juices, grease and other food products off scale and display, keeping scale looking newer, longer.
- Replacement ClearShield™ Protective Covers available in convenient 3 packs (Note: ClearShields will only fit Edlund BRAVO! Scales)
- Features Edlund's exclusive dual housing technology
- Field recalibratable (optional calibration weight available)
- Easy to use one button operation
- Large, Easy-to-read LCD display
- Removable stainless steel platform for easy cleaning
- Auto-Shut-Off Feature
- UL/CUL/CE approved dual voltage AC Power supply or works with 9 volt battery (batteries not included)
- Side Mounted Power Jack helps eliminate broken power supplies
- Power jack plug eliminates internal corrosion when used with batteries
- NSF Certified.
- 1 Year Warranty
- Not legal for trade



Model Number	Description	Product Code	Case Cube Ft3/M3	Master Case	Case Weight lbs./kgs
BRVS-10	BRAVO 10lb Stainless Steel Digital Scale with ClearShield™ Protective Cover	58400	3.7/1.10	8	19/8.7
	ClearShield™ Protective Cover - 3 pack	CV076		1	

Bravo Scale with Exclusive ClearShield™ Protective Cover



Stainless Steel Platform
ClearShield™ Protective Cover
Scale



BRVS-10 Stainless Steel Digital Scale

High Performance Digital Scales



Awarded U.S. Patent Numbers:
7,554,403 • 7,872,201 • 7,870,776



14 Times



POSEIDON™ SUBMERSIBLE STAINLESS STEEL PORTION SCALE

Self-calibrating so you don't need to send it back. Submersible so it's easy to clean. Turn it over. Dunk it under. A rugged waterproof design ensures it handles the harshest environments. Patented technology brings industry-changing innovation to the foodservice kitchen. It's turning the industry upside down!

Features:

- All stainless steel body
- Self-calibrating
- Submersible, for easy cleaning
- Dual Housing Technology™ to prevent corrosion
- Scale Within a Scale™ design helps protect internal components against damage due to accidental shock
- Most finite readout in the industry
- UL/CUL/CE approved dual voltage A.C. power supply included; also operates on 4 AA batteries (not included)
- Adjustable leveling feet with bubble level
- Six capacity display options:
10 lbs. x 0.1 oz.
10 lbs. x 0.005 lbs.
10 lbs. x 1/8 oz.
5000 g x 1 g
160 oz. x 0.05 oz.
160 oz. x 1/8 oz.
- Programmable, so users can select length of time for battery-save feature, change gravity settings, and turn off specific weighing modes to reduce confusion
- 6" x 6 3/4" one-piece platform with optional 7" x 10" oversized platform available



Self-calibrating – simply set to calibration mode, flip it over, and the indicator light illuminates, and goes out when it is calibrated.



WSC-10 OP

Model Number	Description	Product Code	Case Cube F3/M3	Master Case	Case Weight lbs./kgs
WSC-20	Stainless Steel Submersible Portion Scale with 6 Display Options and Self-Calibration Feature	53900	3.7/.10	8	43/18.5
WSC-20 OP	Stainless Steel Submersible Portion Scale with 6 Display Options, Self-Calibration Feature and Oversized Platform	53920	3.7/.10	8	50/21.8
WSC-10	Stainless Steel Submersible Portion Scale with 6 Display Options and Self-Calibration Feature	53800	3.7/.10	8	43/18.5
WSC-10 OP	Stainless Steel Submersible Portion Scale with 6 Display Options, Self-Calibration Feature and Oversized Platform	53820	3.7/.10	8	50/21.8
WSC-5	Stainless Steel Submersible Portion Scale with grams only function and Self-Calibration Feature	53801	3.7/.10	8	43/18.5
WSC-5 OP	Stainless Steel Submersible Portion Scale with grams only function, Self-Calibration Feature and Oversized Platform	53821	3.7/.10	8	50/21.8

High Performance Digital Scales



Awarded U.S. Patent Numbers:
7,554,403 • 7,872,201



14 Times



EDL SERIES STAINLESS STEEL PORTION SCALE

With the EDL-10 you get absolute accuracy in a small, rugged design that stands up to harsh foodservice environments and saves time and money. Customizable, programmable, and rechargeable, the EDL-10 makes it easy to weigh your options.

Features:

- The industry's most customizable scale!
- Six capacity display options:
10 lbs. x 0.1 oz.
10 lbs. x 0.005 lbs.
10 lbs. x 1/8 oz.
5000 g x 1 g
160 oz. x 0.05 oz.
160 oz. x 1/8 oz.
- Most finite readout in the industry of 1 g at full capacity
- UL/CUL/CE approved dual voltage A.C. power supply included
- Comes complete with rechargeable battery pack
- Programmable capability enables operators to request length of time for battery-save feature, change gravity settings, and turn off specific weighing modes to reduce confusion (done at factory)
- 6" x 6 3/4" one-piece platform with splashguard washers for excellent corrosion protection
- Optional 7" x 10" oversized platform available
- Adjustable leveling feet with bubble level
- Dual Housing Technology™ provides moisture resistance to prevent corrosion
- Scale Within a Scale™ design helps protect internal components against damage due to accidental shock



EDL-10 OP

Model Number	Description	Product Code	Case Cube F3/M3	Master Case	Case Weight lbs./kgs
EDL-10	Heavy Duty Multi-function Stainless Steel Digital Scale with Rechargeable Battery Pack	51200	3.7/.10	8	43/18.5
EDL-10 OP	Heavy Duty Multi-function Stainless Steel Digital Scale with Rechargeable Battery Pack and 7" x 10" Oversized Platform	51220	3.7/.10	8	50/21.8
EDL-5	Heavy Duty 5000 g x 1 g Stainless Steel Digital Scale with Rechargeable Battery Pack	51202	3.7/.10	8	43/18.5
EDL-5 OP	Heavy Duty 5000 g x 1 g Stainless Steel Digital Scale with Rechargeable Battery Pack and 7" x 10" Oversized Platform	51221	3.7/.10	8	50/21.8

High Performance Digital Scales



Awarded U.S. Patent Numbers:
7,554,403 • 7,872,201

RESOLUTION RGS-600 PRECISION GRAM SCALE

When strict ingredient measurements are absolutely critical, our Resolution RGS-600 is precisely the scale you're looking for. The Resolution scale is ruggedly built for the foodservice environment yet accurately measures down to one-tenth gram increments. You can develop recipes that are unique, meet dietary needs, and save money on high price ingredients. Make it your resolution.



Accurately measures to one-tenth gram

UNITS OF MEASURE:



1 lb. 4.0 oz. x 0.01 oz.



600 g x 0.1 g



1.25 lbs. x 0.0002 lbs.



20.0 oz. x 0.01 oz.

Features:

- NSF certified
- Patented "dual housing technology"
- All stainless steel construction
- Unique "scale within a scale" design
- Operates on 4AA batteries or power supply
- UL/CUL/CE approved dual voltage power supply included

Model Number	Description	Product Code	Case Cube Ft3/M3	Master Case	Case Weight lbs./kgs
RGS-600	Resolution Electronic Gram Scale	56100	3.7/.01	8	43/18.5



14 Times

NEW! Precision Cannabis Scale



NEW! CAN-600 Precision Cannabis Scale

Edlund is excited to introduce our new precision measurement Cannabis scale. With a capacity of 600 grams and graduations as precise as 0.1 gram, this new scale offers a multitude of high-end features plus the flexibility to perform other weighing tasks when required. Programmable weighing options include decimal ounces as well as decimal pounds. Its rugged all stainless-steel construction and patented technology will provide years of reliable use. Plus, with the included CE approved power supply and 4AA batteries already installed, this scale is ready to use right out of the box. To be blunt, we believe you won't find a better or more reliable, multi-purpose Cannabis scale anywhere.

Features:

- Accurately measures to one-tenth gram
- NSF certified
- Patented "dual housing technology"
- All stainless-steel construction
- Unique "scale within a scale" design
- Additional programmable weighing modes
- Operates on 4 AA batteries or power supply
- CE approved dual voltage power supply and 4 AA batteries included



14 Times

Model Number	Description	Product Code	Case Cube Ft3/M3	Master Case	Case Weight lbs./kgs
CAN-600	ELECTRONIC PRECISION CANNABIS SCALE	56500	3.7/.01	8	43/19.5

High Value Digital Scales



DFG-160

DFG SERIES PRECISION PORTION SCALES

WOW! Our DFG Series Precision Portion Scale offers all of the features operators have been asking for, now at our LOWEST PRICE EVER! With more corrosion protection, larger standard and oversize platform options, NSF Certification, dual-voltage power supply, larger LCD display, and decimal ounce, fractional ounce, and gram functions all included, this scale leaves the competition weigh behind.

Features:

- NSF Certified
- Standard 6" x 6 3/4" removable stainless steel platform
- OP Model includes both standard and larger 10" x 7" stainless steel platforms
- Power jack plug provides corrosion protection when batteries are used
- UL/ CUL/CE approved dual voltage AC power supply included
- Also operates on 9 volt battery (not included)
- Low battery indicator
- Ounce, fractional ounce and gram selection switch
- Automatic shut-off feature when used with battery or power supply (battery not included)
- Larger, easy-to-read LCD display
- Field recalibratable (optional calibration weight not included)

Model Number	Description	Product Code	Case Cube F3/M3	Master Case	Case Weight lbs./kgs
DFG-160	160.0 oz. x 0.1 oz. / 160 oz. x 1/8 oz. / 5000 g x 1g Digital portion control scale with plastic body and stainless steel platform	50300	1.8/.5	4	15/7.0
DFG-160 OP	Standard and Oversized Platform 10" x 7" Ideal for sub sandwiches	50320	.4/.01	1	5.0/2.25
DFG-160 FF	Standard and French fry platform	50330	.8/.02	1	5.0/2.25
DFG-160 IC	Standard and Ice Cream platform	50340	.8/.02	1	5.0/2.25



DFG-160 OP



14 Times

2023 Advertising



Bluetooth®

It's time to cut the cord

Edlund is proud to introduce the industry's fastest, most flexible, and most durable Pizza/Specialty Scales!

Now you can have the scale you've always needed, the weigh you've always wanted, with plug and play options that put you in control. With the first and only pizza/specialty scales utilizing Bluetooth connectivity, you can eliminate the cord altogether! Want a simple scale operation? The new Bravo! BBPZ-20 gives you the choice of a 10" or 12" platform with just two buttons. Need programmability for different menu items? The Edvantage® EDPZ-20 will do the job. And with the extra-large bright red LED display, you can see the readout across the room! You can even add options later as you need them. Whatever configuration you choose, you'll get the accuracy, speed, and durability you expect from the Edlund brand. The wait is finally over!



Edlund Company LLC, 319 Queen City Park Road, Burlington, VT 05401, USA 800-772-2126 www.edlundco.com An ISO 9001:2015 certified company

High Value Digital Scales



E SERIES PORTION SCALES

The E-160 scale has double the capacity (10 lb. X 0.1 oz.) of our old E-80. E Series models are NSF Certified.

Features:

- All solid state electronics
- 5 7/8" x 6 3/4" Removable stainless steel platform
- Automatic zero
- 115 Volt A.C. adapter included
- Also operates on 9 volt battery (not included)
- Automatic push button tare
- Low battery indication
- Automatic shut-off feature when used with battery (not included)
- Ounce or gram mode selection switch



E-160

Deluxe models include one of the platforms listed below

Model Number	Description	Product Code	Case Cube Ft3/M3	Master Case	Case Weight lbs./kgs
E-160	160 oz./5000 g Portion x 0.1 oz./1 g Digital Portion Control Scale With Plastic Body and Stainless Steel Platform	50800	3.25/.09	8	32/14.5
E-160 OP	Standard and Oversized Platform 11" x 7" Ideal for Sub Sandwiches	50820	.3/.01	1	6/2.7
E-160 FF	Standard and French Fry Platform	50830	.3/.01	1	6/2.7
E-160 IC	Standard and Ice Cream Platform	50840	.3/.01	1	6/2.7



E-160 OP



14 Times



E-160 FF



E-160 IC

Specialty Digital Scales

EPZ-5/10/20 DIGITAL PIZZA SCALES

Our NSF Certified digital pizza scales have more options than your menu. Choose from decimal pound, decimal ounce, or gram readings. Indicator can be used as wall or table mounted with push button or foot tare switches. With scales this fast and accurate, your most popular topping will be increased profits.



EPZ-10

Features:

- NSF Certified
- Stainless steel construction
- Reads in pounds, ounces, or grams
- Large 12 1/4" x 12 1/2" (31 cm x 31.7 cm) platform
- EPZ-5 (5000 x 2g) capacity
- EPZ-10 (10.0 lbs x 0.005 lbs, 5.0 Kg x 0.002 kg, 10.0 lbs x 0.1 oz, 160.0 ozs x 0.1 oz)
- EPZ-20 (20.0 lbs x 0.01 lbs, 10.0 Kg x 0.005 kg, 10.0 lbs x 0.2 oz, 320.0 ozs x 0.2 oz)
- Bright 1" (2.5 cm) LCD display
- Available with foot switch or push button tare option
- Wall mounting bracket included
- Uses 6 AA batteries (not included)

Model Number	Description	Product Code	Case Cube Ft3/M3	Master Case	Case Weight lbs./kgs
EPZ-10	Standard model 10 lb pizza scale	57100	1.1/.03	1	10/4.5
EPZ-10H	EPZ-10 with quick disconnect foot tare	57120	1.1/.03	1	11/5
EPZ-10F	EPZ-10 with base mounted front tare button	57140	1.1/.03	1	11/5
EPZ-20	Standard model 20 lb pizza scale	57200	1.1/.03	1	10/4.5
EPZ-20H	EPZ-20 with quick disconnect foot tare	57220	1.1/.03	1	11/5
EPZ-20F	EPZ-20 with base mounted front tare button	57240	1.1/.03	1	11/5
EPZ-5	Metric version pizza scale (5000 g x 2 g)	57300	1.1/.03	1	10/4.5
EPZ-5H	EPZ-5 with quick disconnect foot tare	57320	1.1/.03	1	11/5
EPZ-5F	EPZ-5 with base mounted front tare button	57340	1.1/.03	1	11/5



14 Times

Specialty Digital Scales



14 Times

ERS SERIES RECEIVING SCALES

Our newest series of digital receiving scales! The ERS Series are low profile, heavy-duty portable scales that offer you a choice of plug-in power, AA battery operation, or a rechargeable battery pack option (ERS-60 only). The ERS-150 offers a larger capacity in the same low profile design. The ERS-300 provides a giant 25 1/4" x 19 1/4" stainless steel platform for heavy duty requirements. More value and a better weigh!

Features:

- Large LCD display
- 4 load cell technology
- Special hold feature
- UL/CUL/CE approved dual voltage power supply included
- Also operates on 6 AA batteries (batteries not included)
- Rechargeable battery option (replaces 6 AA batteries, ERS-60 only)
- Wall mounting bracket included
- Large 12x12 1/2" stainless steel platform (ERS-60 and ERS-150)
- Extra large 25 1/4" x 19 1/4" stainless steel platform (ERS-300 only)

Model Number	Description	Product Code	Case Cube F3/M3	Master Case	Case Weight lbs./kgs
ERS-60	60 lbs./30 kg x .25 oz./0.005 kg Receiving Scale with Hold Feature	51800	1.1/.03	1	13/5.7
ERS-60 RB	60 lbs./30 kg x .25 oz./0.005 kg Receiving Scale with Hold Feature and Rechargeable Battery Pack	51850	1.1/.03	1	13/5.7
ERS-150	150 lbs./75 kg x .05 lb./0.02 kg Receiving Scale with Hold Feature	51860	1.1/.03	1	13/5.7
ERS-300	300 lbs./150 kg x .1 lb./0.05 kg Receiving Scale with Hold Feature	51870	4.2/.11	1	70/31.8



ERS-300



ERS-150

Dishwasher Safe Mechanical Scales

FIVE STAR SERIES HEAVY DUTY PORTION SCALES



DOU-2

Forget those heavy duty imports! Edlund produces the only heavy duty deluxe portion control scales designed exclusively for the foodservice industry that can stand up to high volume operations. Built to meet the toughest operator demands, these scales have extra stainless steel internal housing and platform supports to absorb accidental shock without damaging the precise internal mechanism. All models come with dashpots for instant reading, have all stainless steel springs and mechanisms and with the face plate removed, all models can be submerged for thorough cleaning. These scales are NSF Certified, washable, and are the finest portion control scales on the market.

Features:

- Dishwasher safe
- NSF Certified
- Stainless steel springs & mechanisms
- All stainless steel housing
- Air dashpot for faster reading
- Rustproof
- 30° viewing angle for easier reading
- Reinforced stainless steel interior and platform supports
- Field re-calibratable
- Oversized 7" x 8 3/4" stainless steel platform
- Scale dimensions 7 1/2" L x 7" W x 9" H
- **Made in USA**

Model Number	Description	Product Code	Case Cube F3/M3	Master Case	Case Weight lbs./kgs
DOU-2	Deluxe heavy duty portion scale with air dashpot and over/under feature. 32 oz. x 1/4 oz. capacity. Rotating dial.	47100	3.5/1.6	6	42/18.9
DCS-2	Deluxe heavy duty portion scale with air dashpot and rotating dial. 32 oz. x 1/4 oz. capacity.	47000	3.5/1.6	6	42/18.9
DCF-2	Deluxe heavy duty portion scale with air dashpot and fixed dial. 32 oz. x 1/4 oz. capacity.	47200	3.5/1.6	6	42/18.9



14 Times



View a demo of this product at www.edlundco.com



CALIBRATION KITS

Unique to Edlund Scales.

Now verify accuracy and recalibrate all stainless steel 2 lb. and 1000 gram scales right in the field with this valuable accessory. **Made in USA**

Model Number	Description	Product Code	Case Cube F3/M3	Master Case	Case Weight lbs./kgs
CK-32	Includes 1/4" hexhead nut driver and 1 lb. test weight with instructions. For use with DCS, DOU, RM, SR, DR, SF, DW, and OU scales (32 oz. by 1/4 and 1/8 oz. scales.)	K060	.04/.001	1	2/.9
CK-1000	For Metric Scales – uses 500 g weight for 1000 g capacity scales.	K062	.04/.001	1	2/.9



CK-32

Dishwasher Safe Mechanical Scales

FOUR STAR SERIES STAINLESS STEEL PORTION SCALES

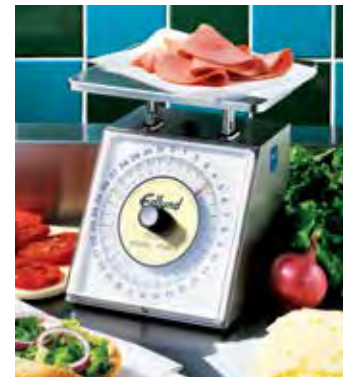
Our Four Star Series stainless steel portion scales are all NSF Certified. With oversized stainless steel platforms, stainless steel springs and mechanisms, these scales are dishwasher safe to guarantee longer life. The Four Star Series provide a larger dial face for more finite readings and are available in both U.S. and metric models.

Features:

- Dishwasher safe. No need to disassemble
- NSF Certified
- Stainless steel springs & mechanisms
- All stainless steel housing
- 32 oz. and 1000 gram models are field re-calibratable
- 30° viewing angle for easier reading
- Oversized 7" x 8 3/4" platform
- Rustproof
- Scale dimensions 7 1/2" L x 7" W x 9" H
- **Made in USA**

U.S. measure portion control scales with rotatable dials

Model Number	Description	Product Code	Case Cube F3/M3	Master Case	Case Weight lbs./kgs
RMD-2	Deluxe – with air dashpot and oversized 7" x 8 3/4" platform (32 oz. x 1/8 oz.)	45020	3.5/1.6	6	36/16.4
RM-2	With oversized 7" x 8 3/4" platform (32 oz. x 1/8 oz.)	45220	3.5/1.6	6	36/16.4
RM-5	With oversized 7" x 8 3/4" platform (5 lbs. x 1/8 oz.)	45320	3.5/1.6	6	36/16.4
RM-25	With oversized 7" x 8 3/4" platform (25 lbs. x 2 oz.)	45520	3.5/1.6	6	36/16.4



RMD-2



14 Times



14 Times



U.S. measure portion control scales with fixed dial

Model Number	Description	Product Code	Case Cube F3/M3	Master Case	Case Weight lbs./kgs
FMD-2	Deluxe – with air dashpot and oversized 7" x 8 3/4" platform (32 oz. x 1/8 oz.)	45060	3.5/1.6	6	36/16.4



RM-25



FMD-2

METRIC MODELS

Metric models with rotatable dials feature oversized 7" x 8 3/4" (17.8 cm x 22.5 cm) stainless steel platforms

Model Number	Description	Product Code	Case Cube F3/M3	Master Case	Case Weight lbs./kgs
RMD-1000	Deluxe – with air dashpot for instant reading. Capacity 1000 g x 5 g	45640	3.5/.1	6	36/16.4
RM-1000	Capacity 1000 g x 5 g	45620	3.5/.1	6	36/16.4
RM-2000	Capacity 2000 g x 10 g	45720	3.5/.1	6	36/16.4
RM-5000	Capacity 5000 g x 20 g	45820	3.5/.1	6	36/16.4
RM-10000	Capacity 10000 g x 25 g	45920	3.5/.1	6	36/16.4

Metric Models Not Shown.

Note: Metric models are not dishwasher safe, but can be submerged for easy cleaning.

Dishwasher Safe Mechanical Scales

PREMIER SERIES STAINLESS STEEL PORTION SCALES

Edlund's most popular line of all stainless portion control scales have features that no import scale can match. Our newly designed all stainless steel construction allows for dishwasher safe cleaning without the need to disassemble the scale. With deluxe air dashpot models as well as standard models, U.S. measure, all metric and combination models available, and regular and oversized platform options, Edlund offers the most complete line of affordable, NSF Certified scales in the foodservice industry.

Features:

- Dishwasher safe
- NSF Certified
- Stainless steel springs & mechanisms
- All stainless steel housing
- Deluxe models have air dashpot for instant reading
- 32 oz. and 1000 gram models are field re-calibratable
- Scale dimensions 6 3/4" L x 6 1/2" W x 9" H
- **Made in USA**



DR-2 OP SR-2 SF-2 DR-34 C OU-32 MSR-1000



OP models have 7" x 8 3/4" stainless steel platforms

Model Number	Description	Product Code	Case Cube F3/M3	Master Case	Case Weight lbs./kgs
DR-2 OP	Deluxe – with air dashpot allows for instant reading. Capacity 32 oz. x 1/8 oz.	41120	3.5/.1	6	32/14.4
SR-2 OP	Capacity 32 oz. x 1/8 oz.	42120	3.5/.1	6	32/14.4
SR-5 OP	Capacity 5 lbs. x 1 oz.	42220	3.5/.1	6	32/14.4
SR-10 OP	Capacity 10 lbs. x 2 oz.	42320	3.5/.1	6	32/14.4



DR-2 OP

DR and SR standard models have 6" x 6 3/4" stainless steel platforms

Model Number	Description	Product Code	Case Cube F3/M3	Master Case	Case Weight lbs./kgs
DR-2	Deluxe – with air dashpot. Capacity 32 oz. x 1/8 oz.	41100	3.5/.1	6	30/13.5
DR-1	Deluxe – with air dashpot. Capacity 16 oz. x 1/8 oz.	41600	3.5/.1	6	30/13.5
SR-1	Capacity 16 oz. x 1/8 oz.	41900	3.5/.1	6	30/13.5
SR-2	Capacity 32 oz. x 1/8 oz.	42100	3.5/.1	6	30/13.5
SR-5	Capacity 5 lbs. x 1 oz.	42200	3.5/.1	6	30/13.5
SR-10	Capacity 10 lbs. x 2 oz.	42300	3.5/.1	6	30/13.5
SR-25	Capacity 25 lbs. x 4 oz.	42400	3.5/.1	6	30/13.5



SR-2

Fixed dial standard models have 6" x 6 3/4" platforms

Model Number	Description	Product Code	Case Cube F3/M3	Master Case	Case Weight lbs./kgs
DF-2	Deluxe – with air dashpot. Capacity 32 oz. x 1/8 oz.	41800	3.5/.1	6	30/13.5
SF-2	Capacity 32 oz. x 1/8 oz.	43600	3.5/.1	6	30/13.5
SF-5	Capacity 5 lbs. x 1 oz.	43700	3.5/.1	6	30/13.5
SF-25	Capacity 25 lbs. x 4 oz.	43800	3.5/.1	6	30/13.5



SF-2

Dishwasher Safe Mechanical Scales

PREMIER SERIES STAINLESS PORTION SCALES

Combination U.S. measure and metric (grams & ounces) have 15.2 cm x 17.1 cm (6" x 6¾") platforms

Model Number	Description	Product Code	Case Cube F3/M3	Master Case	Case Weight lbs./kgs
DR-34C	Deluxe – with air dashpot for instant reading Capacity 34 oz./1000 g x ¼ oz./5 g	41400	3.5/.1	6	30/13.5
SR-1000C	Capacity 34 oz./1000 g x ¼ oz./5 g	43200	3.5/.1	6	30/13.5
SR-2200C	Capacity 5 lbs./2200 g x 1 oz./25 g	43300	3.5/.1	6	30/13.5
SR-5000C	Capacity 11 lbs./5 kg x 2 oz./50 g	43400	3.5/.1	6	30/13.5
SR-11000C	Capacity 25 lbs./11 kg x 4 oz./100 g	43500	3.5/.1	6	30/13.5

Our over & under and metric model Premier Scales are fully submersible for easy cleaning.

Over & Under Our Premier Series over & under scales feature special dials with ¼ oz., ½ oz., and 1 oz. target readings for faster portioning. Available with either removable bowl or standard fixed platform, and they're dishwasher safe as well.

Model Number	Description	Product Code	Case Cube F3/M3	Master Case	Case Weight lbs./kgs
OU-32	Deluxe – with air dashpot and removable 3 quart bowl. Capacity 32 oz. x ¼ oz.	41330	1/.03	1	6/2.7
OU-32P	Deluxe – with air dashpot and 6" x 6¾" fixed platform instead of bowl. Capacity 32 oz. x ¼ oz.	41300	3.5/.1	6	30/13.5

All metric model scales with oversized platforms 17.8 cm x 22.2 cm (7" x 8¾")

Model Number	Description	Product Code	Case Cube F3/M3	Master Case	Case Weight lbs./kgs
MDR-1000 OP	Deluxe – with air dashpot. Capacity 1000 g x 5 g	41520	3.5/.1	6	36/16.4
MSR-1000 OP	Capacity 1000 g x 5 g	42720	3.5/.1	6	36/16.4
MSR-2000 OP	Capacity 2000 g x 10 g	42820	3.5/.1	6	36/16.4
MSR-5000 OP	Capacity 5000 g x 20 g	43020	3.5/.1	6	36/16.4

All metric model scales with standard platforms 15.2 cm x 17.1 cm (6" x 6¾")

Model Number	Description	Product Code	Case Cube F3/M3	Master Case	Case Weight lbs./kgs
MDR-1000	Deluxe – with air dashpot. Capacity 1000 g x 5 g	41500	3.5/.1	6	30/13.5
MSR-1000	Capacity 1000 g x 5 g	42700	3.5/.1	6	30/13.5
MSR-2000	Capacity 2000 g x 10 g	42800	3.5/.1	6	30/13.5
MSR-5000	Capacity 5000 g x 20 g	43000	3.5/.1	6	30/13.5
MSR-10000	Capacity 10 kg x 50 g	42900	3.5/.1	6	30/13.5



14 Times



DR-34C



OU-32



MSR-5000 OP



MSR-2000

Dishwasher Safe Mechanical Scales



Compact Series



SS-16 O

SSR-16

SSC-16

SS-16 P



14 Times



Compare the full size SR-2 to the compact scale.

COMPACT SERIES ALL STAINLESS MECHANICAL SCALES

Edlund's Compact Series scales have the same all-stainless steel body and internal mechanisms as our Premier Scales but in a more compact size. These scales are available in rotating or fixed dial models and feature removable platforms for weighing tacos, french fries or measuring ice cream overruns. Now NSF Certified. **Made in USA**

Rotating Dial

Model Number	Description	Product Code	Case Cube F3/M3	Master Case	Case Weight lbs./kgs
SSR-16	Compact (16 oz. x ¼ oz.)	46200	1.8/.05	6	12/5.4

Fixed Dial

Model Number	Description	Product Code	Case Cube F3/M3	Master Case	Case Weight lbs./kgs
SS-16	Compact (16 oz. x ¼ oz.)	46010	1.8/.05	6	12/5.4
SS-16 O	Compact with Oversized Platform	46020	1.8/.05	6	12/5.4
SS-16 P	Compact with French Fry/Taco Platform	46030	1.8/.05	6	12/5.4
SSC-16	Compact Ice Cream Scale (16 oz.) Pints	46110	1.8/.05	6	12/5.4

Heavy Duty Mechanical Scales

HD SERIES STAINLESS PORTION SCALES

The newest 2 lb. capacity additions to our Heavy Duty Stainless Scales line feature rotating dials with an over-under function, air dashpots for instant readings, temperature compensated mechanisms, and graduations down to 1/8 oz. These NSF Certified scales offer Edlund quality construction and are available with a standard oversize stainless steel platform or optional stainless bowl. The large 30 degree angle rotating dial face and red pointer assure accurate readings every time. These new heavy duty scales will lighten your load and make quick work of your portioning tasks.



HD-2RD

Features:

- 32 oz. by 1/8 oz. capacity
- 1/2 oz., 1/4 oz. and 1/8 oz. over/under function on rotating dial
- All Stainless Steel Housing
- 8 1/2" x 8 1/2" Stainless Platform
- Stainless Steel Bowl Option also available (11 3/4" diameter)
- 30 degree angle rotating dial
- NSF Certified
- Air Dashpots for instant readings
- Temperature compensated mechanism
- Large red pointer gives fast, accurate measurements

Our rugged HD Series portion scales have 8 1/2" dial faces and feature brushed stainless steel housing and 8 1/2" x 8 1/2" stainless steel platforms. HD-2, HD-5 and HD-10 models are available with air dashpots for instant reading.

Model Number	Description	Product Code	Case Cube Ft3/M3	Master Case	Case Weight lbs./kgs
HDR-2 DP	Capacity 32 oz. x 1/8 oz.	48120	4/.12	4	30/13.5
HDR-2 DPB	With Bowl and dashpot	48130	4/.12	4	30/13.5
HD-2	Capacity 32 oz. x 1/8 oz.	48100	4/.12	4	30/13.5
HD-2 DP	With dashpot	48110	4/.12	4	30/13.5
HD-5	Capacity 5 lbs. x 1/2 oz.	48200	4/.12	4	30/13.5
HD-5 DP	With dashpot	48210	4/.12	4	30/13.5
HD-10	Capacity 10 lbs. x 1/2 oz.	48300	4/.12	4	30/13.5
HD-10 DP	With dashpot	48310	4/.12	4	30/13.5
HD-25	Capacity 25 lbs. x 1 oz.	48400	4/.12	4	30/13.5



14 Times

Heavy Duty Mechanical Scales



14 Times

HD SERIES STAINLESS RECEIVING SCALES

Edlund's HD Series receiving scales are available in 50, 100 and 200 lb. capacities. 50 lb. models have stainless steel housing and platforms or 4" stainless steel half pan. 100 and 200 lb. models feature 11 1/2" dials, stainless steel platforms and special chip-resistant enamel finish.

Model Number	Description	Product Code	Case Cube Ft3/M3	Master Case	Case Weight lbs./kgs
HD-50	Capacity 50 lbs. x 2 oz. Platform Size 10 3/4" x 9 1/2" Stainless Steel	48500	4.2/.12	4	37/16.8
HD-50P	50 lb. Supermarket Scale is easier to use than Hanging Scales. Produce weighing scale comes complete with cradle and 4" half pan. Capacity 50 lbs. x 2 oz.	48530	1.2/.04	1	9/4.05
HD-100	Capacity 100 lbs. x 4 oz. Platform Size 12" x 12" Stainless Steel	48700	3.4/.1	1	29/13.1
HD-200	Capacity 200 lbs. x 1 lb. Platform Size 15" x 15" Stainless Steel	48800	3.4/.11	1	32/14.4



HD-50P

Extra Heavy Duty Mechanical Scales

RF SERIES EXTRA HEAVY DUTY RECEIVING SCALES

These are our strongest **heavy duty receiving scales**. American Made with stainless body and extra thick stainless 9" x 11" platform. **Made in U.S.A.**



RF-25

Model Number	Description	Product Code	Case Cube Ft3/M3	Master Case	Case Weight lbs./kgs
RF-25	Capacity 25 lbs. x 2 oz.	49200	2.5/.07	1	20/9
RF-50	Capacity 50 lbs. x 4 oz.	49100	2.5/.07	1	20/9
RF-22.6	Capacity 50 lbs./22.6 kg x 4 oz./100 g	49300	2.5/.07	1	20/9

Bakers Dough Scales



14 Times



BDSS-8

DELUXE BAKERS DOUGH SCALES

Edlund's deluxe bakers scales have more features than competitive models including 12 gauge stainless steel platters, stainless steel poise and beam and rubber foot pads. Comes complete with scoop and weights. **Made in U.S.A.**

Model Number	Description	Product Code	Case Cube F3/M3	Master Case	Case Weight lbs./kgs
BDSS-8	Capacity 8 lbs. x ¼ oz.	55120	2.7/.08	1	29/13.05
BDSS-8LS	Less Scoop and Counter Weight	55121	2.7/.08	1	27/12.15
BDSS-16	Capacity 16 lbs. x ¼ oz.	55020	2.7/.08	1	37/16.65
BDSS-16LS	Less Scoop and Counter Weight	55021	2.7/.08	1	35/15.75



BDS-16

STANDARD BAKERS DOUGH SCALES

Standard bakers dough scale comes with oversized footed plastic scoop, counter weight, measuring weights, and rubber foot pads. Finished in FDA epoxy powder coat. **Made in U.S.A.**

Model Number	Description	Product Code	Case Cube F3/M3	Master Case	Case Weight lbs./kgs
BDS-8	Capacity 8 lbs. x ¼ oz.	55100	2.7/.08	1	29/13.05
BDS-8LS	Less Scoop and Counter Weight	55101	2.7/.08	1	27/12.15
BDS-16	Capacity 16 lbs. x ¼ oz.	55000	2.7/.08	1	37/16.65
BDS-16LS	Less Scoop and Counter Weight	55001	2.7/.08	1	35/15.75



2023 Advertising

INNOVATION ON DISPLAY



EHP-30 High-Profile™ Waterproof Digital Scale



BRV-HP30 High-Profile™ Digital Scale with ClearShield™

Introducing the Industry's First High-Profile™ Digital Scales!

Our new patent-pending High-Profile™ scales lead the weigh in features and performance. Whether you choose the stainless-steel waterproof and submersible version or our lower cost BRAVO! version with ClearShield™, you get the largest LED readout available, a 30lb capacity, 10 quick set, programmable memory buttons, and an innovative, flashing over-under function, plus other features too numerous to measure.

Put your kitchen on display with High-Profile™ scales from Edlund!

Want to learn more? Go to Edlundco.com and download our High-Profile brochures.



Best in Class for 14 years

Edlund Company LLC, 319 Queen City Park Road, Burlington, VT 05401, USA 800-772-2126 www.edlundco.com An ISO 9001:2015 certified company

As seen in leading foodservice trade magazines.

Can Openers



In 1925, the #1® can opener created a whole new standard in quality and performance. Today, that tradition of excellence continues, with an extensive offering of top-of-the-line manual and electric can openers – all carefully crafted to last for decades.



Can Openers Important Information

Edlund knives are reversible for longer life and available through your dealer.

Change gears when both sides of the knife have been used.

Important: Edlund manual can openers have nickel plated cast iron parts (except S-11).

Note: If cleaned in the dishwasher these parts can rust over time. Always dry thoroughly and coat with food grade vegetable oil to help inhibit rust from forming.

This chart is designed to help you determine which can opener is right for you. Be sure to choose a can opener based on your requirements for opening the **maximum number of cans per day**, not your average.

Note:

- If you open both ends of can for recycling, please double your usage figure.
- **Exceeding recommended daily use limits can cause premature wear and may void your warranty.**
- Regular cleaning will prolong unit life. We recommend using the ST-93 cleaning tool. See page 78.
- Inspect and change knives and gears regularly. Metal to metal friction will eventually cause knives and gears to wear. This is normal.
- Knives and gears should last 2500-5000 cans depending on usage (type of cans being opened).
- Manual opener knives are reversible.

DO NOT SHARPEN MANUAL OR ELECTRIC KNIVES OR CROWN PUNCH BLADES:

Edlund knife edges are intentionally dull and rounded to fold metal not cut it, thereby providing a smooth rim edge. Re-conditioning of crown punch blades is available through factory. Edlund recommends purchasing a second set of blades with each crown punch.

CAN OPENER REFERENCE CHART

Model	Opening Rate Per Minute	Recommended Daily Use (cans per day)	Important Notes
MANUAL OPENERS			
S-11	4-6 cans	up to 50	S-11 is NSF Certified and dishwasher safe. All stainless steel. Comes apart easily for cleaning. 5 year warranty.
U-12	4-6 cans	up to 50	Comes apart easily for cleaning. Nickel plated with stainless steel shaft, knife and gear.
#1®	4-6 cans	up to 50	Varies by model, limited by operator fatigue. Nickel plated cast iron.
SG-2	4-6 cans	up to 15	SG-2 is NSF Certified and dishwasher safe. All stainless steel. Comes apart easily for cleaning. 2 year warranty.
G-2	4 cans	up to 15	Nickel plated, with stainless steel shaft, knife and gear. Comes apart easily for cleaning.
#2®	4 cans	up to 15	Varies by model, limited by operator fatigue. Nickel plated cast iron.
ELECTRIC OPENERS			
#266	4-7 cans	up to 75	Clean, lubricate and adjust regularly for proper operation. Single speed.
#203	4-7 cans	up to 75	Clean, lubricate and adjust regularly for proper operation. Two speed model.
#270	5-8 cans	up to 200	NSF Certified. Stainless steel knife holder, stainless steel gear & cover plate are easily removed for cleaning.
#270 C	5-8 cans	up to 200	Same as above. Features adjustable slide bar to fit international can sizes.
CROWN PUNCHES			
#700/700T Stainless Steel Manual Crown Punch	6-10 cans	100-200	Removes lid with one stroke. Limited by operator; bolting down will improve operation.
#610 Air Powered Crown Punch	8-12 cans	200-400	An air drying filter will extend cylinder and valve life. 610L features automatic linear lid remover.
#610 M	8-12 cans	200-400	Same as above with magnetic lid remover.
#625 Heavy Duty Air-Powered Crown Punch	8-12 cans	up to 2,000	Heavy duty design for high volume use. 625L feature automatic linear lid remover.
#625 M	8-12 cans	up to 2,000	Heavy duty with magnetic lid remover.
#625 T	8-12 cans	up to 2,000	Extra tall for large square cans.
#625 TM	8-12 cans	up to 2,000	Extra tall for large square or oversized cans with magnetic lid remover.
#625 A	8-12 cans	up to 3,000	Heavy duty with automatic alligator lid removal system.

NEW! Edvantage® #1® Manual Can Opener



EDV-1 Edvantage® #1® Manual Can Opener

In celebration of our 95th year Edlund is proud to introduce "The new Gold Standard in manual can opener design!" The new Edvantage® #1® has more features to make can opening requirements easier to manage, with a new 4-sided knife, and more comfortable ergonomic knob, plus our new exclusive Edvancoat™ technology more than doubles the wear life of the gear. And with our newly designed tool-free disassembly feature, no other manual opener comes close. Open the door to our easier to use, longer lasting, lower maintenance opener. You'll see the Edvantage®!

Features:

- Patent Pending!
- New! Edvantage® exclusive Edvancoat™ technology doubles wear life of gear
- New! 4-sided knife design provides up to 10,000 openings before replacement
- New! larger ergonomic knob provides more comfort and reduces operator fatigue
- New! Tool-Free disassembly for easy cleaning and part replacement
- New! Two Year Warranty!
- **Made in U.S.A.**

NEW! Edvantage® #1® Manual Can Opener

Our new Edvantage® #1® Manual Can Opener introduces the "New Gold Standard in Manual Can Opener Design!"



Shown with Edvantage® stainless steel base



New! Edvancoat™ technology doubles wear life of gear



New! 4-sided knife design provides up to 10,000 openings before replacement



New! Larger ergonomic knob provides more comfort and reduces operator fatigue



New! Tool-free disassembly for easy cleaning and part replacement



Patent Pending!

Model Number	Description	Product Code	Case Cube Ft3/M3	Master Case	Case Weight lbs./kgs
EDV-1NB	#1® EDVANTAGE® NO BASE	10000	1.5/.14	3	22/9.9
EDV-1PB	#1® EDVANTAGE® WITH PLATED BASE	10100	1.5/.14	3	28/12.6
EDV-1SS	#1® EDVANTAGE® WITH WITH SS BASE	10300	1.5/.14	3	27/12.3
EDV-1PB	#1® EDVANTAGE® REPLACEMENT PART KIT	KT1000	.4/.04	6	2.7/1.25

NSF Manual Can Openers

S-11 MANUAL CAN OPENERS

WITH 5 YEAR WARRANTY!



S-11 Made in U.S.A.

The most sanitary can opener in the world! Rustproof, NSF Certified and dishwasher safe. All stainless steel. Parts remove easily for replacement.

Model Number	Description	Product Code	Case Cube F3/M3	Master Case	Case Weight lbs./kgs
S-11	Stainless Steel Can Opener (NSF Certified) With cast stainless steel base	15000	3.3/0.1	3	30/13.6
S-11L	With long bar for cans up to 17" high (50 cm)	15300	3.3/0.1	3	30/13.6
S-11E	"Extra Value" comes complete with ST-93 cleaning tool and 1 extra knife and gear	15400	3.3/0.1	3	31/14.1
S-11C	Clamping Base Model (NSF Certified) Now available with clamp instead of screws. Secures to underside of table	15020	3.3/0.1	3	30/13.6
S-11CL	With long bar for cans up to 17" high (50 cm)	15320	3.3/0.1	3	30/13.6
S-11CE	"Extra Value" - Clamping Base Model complete with ST-93 cleaning tool and extra knife and gear.	15420	3.3/0.1	3	32/14.5
S-11WB	Without Base	15200	3.3/0.1	3	21/9.5
S-11TP	Tamper resistant opener with tamper proof base	15080	3.3/0.1	3	30/13.6

Note: S-11 has standard bar length of 16" (40.6 cm) long. Extra long bar is 22" (55.9 cm) long.

U SERIES MANUAL CAN OPENERS

Edlund now offers the Universal Series Manual Can Openers. These can openers offer substantial improvements over our popular #1® and #2® models. The U-12 includes many of the same design features as our S-11 standard openers, with quick change gear, stainless steel shaft and pull pin for easy blade replacement. The base design features a replaceable insert for a tighter fit and easier slide action. Other base options are also available. NSF Certified.

Model Number	Description	Product Code	Case Cube F3/M3	Master Case	Case Weight lbs./kgs
U-12	Quick change NSF can opener with standard length bar and new plated base	14100	3.3/0.1	3	21/9.5
U-12WB	NSF Opener without base	14000	3.3/0.1	3	21/9.5
U-12S	NSF Opener with stainless steel base	14200	3.3/0.1	3	21/9.5
U-12C	NSF Opener with cast stainless steel clamp base	14010	3.3/0.1	3	22/9.9
U-12L	NSF Opener with long bar and plated steel base	14500	3.3/0.1	3	22/9.9
U-12SL	NSF Opener with long bar and stainless steel base	14600	3.3/0.1	3	22/9.9
U-12CL	NSF Opener with long bar and cast stainless steel clamp base	14300	3.3/0.1	3	23/10.4

Note: U-12 Series standard bar length is 16" (40.6 cm) long. Extra long bar is 22" (55.9 cm) long.



U-12 Made in U.S.A.



SG-2 NSF STAINLESS MANUAL CAN OPENERS

WITH 2 YEAR WARRANTY!



SG-2 Made in U.S.A.

For operators who only require a lighter duty manual can opener but want full stainless steel protection, Edlund introduces the SG-2 Model. The flagship of our popular G-2 Series Openers, this new model is all stainless steel, dishwasher safe, and features our patented quick change knife and gear system, and comes with a full two year warranty. A great opener for a Global Marketplace.

Model Number	Description	Product Code	Case Cube F3/M3	Master Case	Case Weight lbs./kgs
SG-2	NSF Stainless Opener with standard bar and stainless base	13100	3.3/0.1	3	18/8.1
SG-2C	NSF Stainless Opener with stainless clamp base	13200	3.3/0.1	3	20/9
SG-2L	NSF Stainless Opener with long bar and stainless base	13300	3.3/0.1	3	20/9
SG-2CL	NSF Stainless Opener with long bar and stainless clamp base	13400	3.3/0.1	3	22/9.8

Note: SG-2 Series standard bar length is 16" (40.6 cm) long. Extra long bar is 22" (55.9 cm) long.

Edlund blades are reversible for longer life and available through your dealer.

NSF Manual Can Openers

G SERIES MANUAL CAN OPENERS



G-2 Made in U.S.A.

The NSF Certified G-2 openers are similar to our #2® openers in size and capacity, but feature the same take-apart design as our U-12 and S-11 models. Other improvements include a stainless steel shaft, a melonite arbor that resists rust, a stainless steel knife and gear and a new base that eliminates metal-to-metal wear and enhances can opener performance.

Model Number	Description	Product Code	Case Cube F3/M3	Master Case	Case Weight lbs./kgs
G-2	NSF Can opener with standard length bar and plated base	16100	3.3/0.1	3	18/8.1
G-2WB	NSF Can opener with standard length bar and without base	16000	3.3/0.1	3	18/8.1
G-2S	NSF Can opener with standard length bar and stainless steel base	16200	3.3/0.1	3	18/8.1
G-2L	NSF Can opener with long bar and plated steel base	16500	3.3/0.1	3	20/9
G-2SL	NSF Can opener with long bar and stainless steel base	16600	3.3/0.1	3	20/9
G-2CL	NSF Can opener with long bar and cast stainless steel clamp base	16700	3.3/0.1	3	20/9

Note: G-2 Series standard bar length is 16" (40.6 cm) long. Extra long bar is 22" (55.9 cm) long.

Edlund blades are reversible for longer life and available through your dealer.

Manual Can Openers

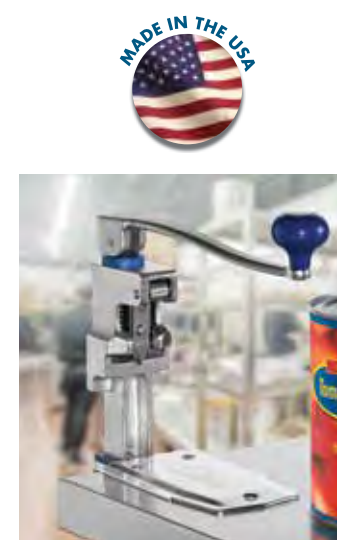
Edlund #1® and #2® MANUAL CAN OPENERS

Edlund's "Old Reliable." Our original manual can openers have an improved finish and a rust-resistant arbor, a plastic bushing for lower turning force and easier opening, and a base with plastic insert for longer plating life.

Model Number	Description	Product Code	Case Cube F3/M3	Master Case	Case Weight lbs./kgs
1	Can Opener with new plated steel base (for cans up to 11" tall) "Old Reliable"	11100	1.4/.04	3	27/12.3
1S	With new stainless steel base	11300	1.4/.04	3	28/12.6
1WB	Without Base (Caution: Using #1® without a base may prevent proper operation)	11000	1.4/.04	3	22/9.9
2	Table Style Can Opener with new plated steel base (for cans up to 7" tall) "Old Reliable"	12100	2.3/.07	6	31/15.8
2S	With new stainless steel base	12200	2.3/.07	6	31/15.8
2WB	Without Base (Caution: Using #2® without a base may prevent proper operation)	12000	2.3/.07	6	23/10.8

Note: #1® and #2® long and cast iron base have been discontinued. Please see models U-12 and G-2 long versions for replacement.

Note: See Reference Chart on page 65 to determine which model opener is right for you.



Edlund #1® Manual Can Opener



#2® Manual Can Opener

CAN PUNCH AND BOTTLE OPENERS

Now #50 can punches are all electro-polished stainless steel.

Model Number	Description	Product Code	Case Cube F3/M3	Master Case	Case Weight lbs./kgs
50SS	Stainless Steel King Size Can Punch	37110	.04/.01	12	3/1.4
50SS	Stainless Steel King Size Can Punch	37170	.55/.16	72	15/6.8

Note: Can punches are sold in dozen packs or bulk packs of 72. Note: Standard plated #50 can punches have been discontinued.

Can Opening Tables

NEW! Quick Access Can Opening and Storage Station

Now, Edlund introduces an innovation breakthrough with our new Edvantage® Can Opening and Storage Station complete with built-in Stainless-Steel NSF can opener. For the first time, operators have immediate access to 16 self-feeding #10 cans from dispensers built on top of the table, right next to the opener, eliminating the stress of having to bend over to reach for every can. Plus, the heavy-duty, all stainless table can hold an additional 36 cans on the 500lb. capacity shelf below. Whether you choose the fixed leg version or the mobile version with locking casters, this is the ultimate solution to most operators' can opening requirements. Every other can rack storage station is simply at a DIS-EDvantage!



Model EDCS-11M shown with Locking Casters and S-11 NSF Can Opener



Model EDCS-2F shown with fixed Legs and SG-2 NSF light duty Can Opener

Features:

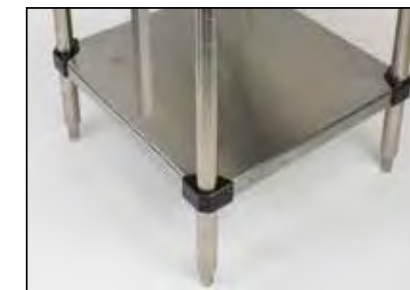
- Heavy-duty, all stainless-steel construction
- Available with locking casters or fixed legs
- Choose S-11 NSF Can Opener or lighter-duty NSF SG-2 Can Opener (included with table)
- Two, top mounted can racks hold 8 cans each (16 cans total)
- Removable can racks make cleaning easy
- Lower shelf stores up to six cases of additional cans (36 cans)
- Table comes with lifetime warranty
- **Made in the USA**

Can Opening Tables

Our new Can Opening Station is another "Top" Shelf product from Edlund!



The Model EDCS-11 Includes Our flagship S-11 NSF Dishwasher Safe Can Opener with 5 year Warranty



Heavy-duty stainless-steel shelf supports more than 500lbs. (Fixed leg model EDCS-11F shown)



Each removable gravity fed can rack holds 8 cans for a total of 16 cans on top



The Model EDCS-2 includes Our SG-2 NSF stainless-steel Can Opener designed for lighter duty can opening requirements



EDCS Can Opening Station with locking casters provides move-anywhere flexibility



With can racks removed the unit offers easy cleanability as well as additional work table space when you need it

Model Number	Description	Product Code	Case Cube Ft3/M3	Master Case	Case Weight lbs./kgs
EDCS-11M	MOBILE CAN OPENING STATION WITH S-11 OPENER	33155	20/.57	1	110/50
EDCS-11F	FIXED LEG CAN OPENING STATION WITH S-11 OPENER	33150	20/.57	1	110/50
EDCS-2M	MOBILE CAN OPENING STATION WITH SG-2 OPENER	33135	20/.57	1	110/50
EDCS-2F	FIXED LEG CAN OPENING STATION WITH SG-2 OPENER	33130	20/.57	1	110/50

Its time to table worker fatigue.

Table-Top Access!

Built-In Opener!

Table comes with a Lifetime warranty

Shown with included Model S-11 Can Opener

NSF

Storage!

NEW! Quick Access Can Opening Station.

All-in-one Innovation.

Introducing the New! Quick Access Can Opening Station from Edlund. With our exclusive table-top mounted can dispensing racks, there's less bending and lifting of heavy cans, which can reduce the stress on your back. Plus, opening cans has never been easier with the included built-in Stainless Steel Can Opener. Available in mobile models with locking casters or fixed leg versions, our NEW! Quick Access Can Opening Station puts every other can rack station at a disadvantage!



Edlund Company LLC, 319 Queen City Park Road, Burlington, VT 05401, USA 800-772-2126 www.edlundco.com An ISO 9001:2015 certified company

As seen in leading foodservice trade magazines.

Your Performance Advantage



New electric slicers from Edlund bring innovation to the kitchen, with slicing that's easier, safer, and more productive than ever.

Edlund slicers give you more! More powerful motors, for easier slicing of meats and cheeses. We added more safety features to protect operators during use, and more easily removable components that make cleaning faster and safer. Want even more? Just add the easily attached scale platform and an Edlund waterproof scale, and you'll save more steps than you ever thought possible.

Want to learn more? Check out our website for our new electric slicers brochure.



Edlund Company, LLC 319 Queen City Park Road, Burlington, VT 05401, USA 800-772-2126 www.edlundco.com An ISO 9001:2015 certified company

As seen in leading foodservice trade magazines.

Electric Can Openers



USDA accepted



270 3 YEAR WARRANTY!



270C



203

TWO SPEED ELECTRIC CAN OPENERS

ALL EDLUND ELECTRIC CAN OPENERS ARE MADE IN THE U.S.A.

The only NSF Certified electric can opener for heavy volume operators.

Now with 3 year warranty. Equipped with 2 speed motor and featuring knife and gear assemblies that can be removed without tools for easy cleaning. The slower second speed helps prevent spillage while opening smaller cans.

Model Number	Description	Product Code	Case Cube Ft3/M3	Master Case	Case Weight lbs./kgs
270	NSF Certified Electric Can Opener 115 Volt	27000	1/.03	1	19/8.6
270	NSF Certified Electric Can Opener 230 Volt (for U.S. specifications only)	27200	1/.03	1	19/8.6

Models available with permanent mounting bracket to prevent theft.

Model Number	Description	Product Code	Case Cube Ft3/M3	Master Case	Case Weight lbs./kgs
270B	NSF Certified Electric Can Opener with security lock-down bracket 115 Volt	27010	1/.03	1	20/9
270B	NSF Certified Electric Can Opener with security lock-down bracket 230 Volt (for U.S. specifications only)	27300	1/.03	1	20/9

270 Continental! with gas shock slide bar mounting is safer and easier to use. Easily adjusts for multiple international can sizes. CE Certified.

Model Number	Description	Product Code	Case Cube Ft3/M3	Master Case	Case Weight lbs./kgs
270C	Electric Can Opener with gas shock Slide Bar 115 Volt	27400	3.3/.1	1	32/14.4
270C	Electric Can Opener with gas shock Slide Bar 230 Volt (for U.S. specifications only)	27500	3.3/.1	1	32/14.4

The #203 Electric Can Opener has been a reliable workhorse for over 30 years. Especially suited for schools and hospitals or operations that open more than one size of cans. The slower second speed for smaller cans prevents spilling of liquids.

Model Number	Description	Product Code	Case Cube Ft3/M3	Master Case	Case Weight lbs./kgs
203	Electric Can Opener 115 Volt 2 speeds	23100	1.1/.03	3	42/18.9
203	Electric Can Opener 230 Volt 2 speeds (for U.S. specifications only)	23200	1.1/.03	3	42/18.9

SINGLE SPEED ELECTRIC CAN OPENERS

Model Number	Description	Product Code	Case Cube Ft3/M3	Master Case	Case Weight lbs./kgs
266	Electric Can Opener 115 Volt	26100	1.1/.03	3	42/18.9
266	Electric Can Opener 230 Volt (for U.S. specifications only)	26200	1.1/.03	3	42/18.9

CLEANING TOOLS

Model Number	Description	Product Code	Case Cube Ft3/M3	Master Case	Case Weight lbs./kgs
ST-93	New Rustproof Can Opener Cleaning Tool – with stainless steel bristles and stainless scraper. Recommended for maintaining proper sanitation on all can openers	38500		1	.5/.2



266



ST-93

High Volume Can Opening Solutions

HEAVY DUTY CROWN PUNCH CAN OPENERS

EDLUND CROWN PUNCH OPENERS ARE MADE IN THE U.S.A.



Model Number	Description	Product Code	Case Cube Ft3/M3	Master Case	Case Weight lbs./kgs
625	HEAVY DUTY AIR POWERED CROWN PUNCH. Ideal for food processors and heavy users who open from 300–2000 cans per day. Requires 85 P.S.I. at 1½–2 C.F.M.	62500	12.6/.36	1	142/63.9
625M	With magnetic lid remover. Operator passes can by magnet after opening. Lid is released when next can is opened. Requires 85 P.S.I. at 1½–2 C.F.M.	62400	12.6/.36	1	145/65.3
625T	Designed for special applications such as 5 gallon square nut, pepper or orange rind cans. Can also be used on round 5 gallon pails. Requires 85 P.S.I. at 1½–2 C.F.M.	62600	16/.46	1	160/72
625TM	Designed for special applications such as 5 gallon square nut, pepper or orange rind cans. Can also be used on round 5 gallon pails. Requires 85 P.S.I. at 1½–2 C.F.M. With magnetic lid remover.	62899	16/.46	1	160/72
625A	Heavy duty industrial opener with P.L.C. driven alligator lid removal system. Fast, reliable, sanitary and safe removal of lids. Up to 3,000 cans per day. Requires 85 P.S.I. at 1½–2 C.F.M. Draws 0.5 amp @ 115 - 230 Volt A.C.	62700	24/.7	1	260/117
	EXTRA "J" BLADE (All Stainless Steel) recommended at time of purchase. Not for 625A.	A756J		1	2/.9

Note: 625A Requires part # A807. See parts prices on page 83.

CROWN PUNCH CAN OPENERS

EDLUND CROWN PUNCH OPENERS ARE MADE IN THE U.S.A.



Open cans with a single stroke! All models are tooled complete with knife and guard ring locator for one standard size #10 round can. Please provide us with specific can size information when ordering. See standard tooling chart below. Crown punches feature a "quick change" option for other size cans.

All Crown Punch Models are USDA accepted.

Note: See reference chart on page 69 to determine which model opener is right for you.

Note: Clean dry air required for all pneumatic Crown Punches.

Model Number	Description	Product Code	Case Cube Ft3/M3	Master Case	Case Weight lbs./kgs
700SS	MANUAL CROWN PUNCH All Stainless Steel Including Mechanism Recommended for up to 200 cans per day. (Comes with standard A756 blade)	70100	3.0/.09	1	44/18.7
700T	MANUAL CROWN PUNCH For extra large cans. (Custom tooling required. Sold separately)**	70200	12.6/.36	1	142/63.9
610	AIR POWERED CROWN PUNCH Standard model for cans up to 11" high Recommended for up to 400 cans per day. Requires 85 P.S.I. at 1½–2 C.F.M.	61000	2.4/.07	1	55/24.8
610M	AIR POWERED CROWN PUNCH with magnetic lid remover for up to 400 cans per day.	61400	12.6/.36	1	90/40.58
	EXTRA "J" BLADE* (All Stainless Steel) recommended at time of purchase. Not for 700.	A756J		1	2/.9

Caution: Do not sharpen Crown Punch Blades. Blades are intentionally dull to provide a smooth can edge. Reconditioning is available through factory.

* Note: New! "J" blade design now provides a smooth seam on inside edge of can. (Not recommended for 700SS.)

** Note: Sample cans required for custom tooling, contact factory for details.

High Volume Can Opening Solutions

STANDARD TOOLING for Crown Punch Openers

Can Size	Diameter (inches)	Diameter (millimeters)
603 (#10)	6 3/16"	157 mm
600	6"	152.4 mm
502	5 1/8"	130 mm
404	4 1/4"	108 mm
401	4 1/16"	103.2 mm
400	4"	101.6 mm

Note: Custom tooling available. Please call factory for details.

Can Size	Diameter (inches)	Diameter (millimeters)
307 (SOUP)	3 7/16"	87.3 mm
303	3 3/16"	81 mm
300	3"	76.2 mm
214	2 7/8"	73 mm
211	2 1/16"	68.3 mm
202	2 1/8"	54 mm

Note: Custom tooling available. Please call factory for details.



CAN CRUSHERS



CH-5000

ELECTRIC HYDRAULIC CAN CRUSHERS

This powerful unit will crush up to 10 cans per minute to a thickness of approximately 1 1/2" and automatically drop the can into a receptacle. The cylinder recycles automatically. The cabinet and crusher box can be thoroughly cleaned.

Model Number	Description	Product Code	Case Cube F3/M3	Master Case	Case Weight lbs./kgs
CH-5000	Electric Hydraulic Can Crusher (115 Volt, 20 Amp)	78000	3.3/.1	1	170/76.5
CH-5000	Electric Hydraulic Can Crusher (220 Volt, 12 Amp)	78200	3.3/.1	1	170/76.5



CA-3000

AIR POWERED CAN CRUSHERS

Our CA-3000 Air Powered Can Crusher is smaller than the Hydraulic, but just as powerful. The CA-3000T will crush taller cans. Operates on 85 P.S.I. min. with 8-10 C.F.M.

Model Number	Description	Product Code	Case Cube F3/M3	Master Case	Case Weight lbs./kgs
CA-3000	Air Powered Can Crusher measures 7 1/2" H x 9" W x 26" L For #10 cans or smaller	77000	3/.09	1	108.5/48.8
CA-3000T	Air Powered Can Crusher measures 7 1/2" H x 9" W x 30" L For taller international cans	77099	3/.09	1	108.5/48.8

Note: Clean dry air required.

MANUAL CAN CRUSHERS

These manually operated crushers will flatten all sizes of open cans up to #10's and reduce volume by 85%. No removal of the can bottom is required and even #10's take just two strokes.

Model Number	Description	Product Code	Case Cube F3/M3	Master Case	Case Weight lbs./kgs
CM-1000 S/S	Heavy Duty Manual Can Crusher all stainless steel table model. (Must be securely mounted to a reinforced table. Table should be secured to floor or wall.)	75100	2.7/.08	1	65/29.3
CM-1000 PB S/S	Pedestal Mounting Base for CM-1000 S/S. All stainless steel. (Unit must be secured to floor. Mounting bolts supplied.)	75300	1.3/.04	1	40/18
CM-1000 WM S/S	Wall Mount Model in all stainless steel (must be mounted to solid wall structure)	75400	2.7/.08	1	75/33.8

Note: Edlund can crushers are designed for crushing #10 cans (6 3/16"/157 mm) or smaller.



CM-1000 S/S

CM-1000PB S/S

2023 Advertising

"The New Gold Standard In Manual Can Openers!"

The new Patent Pending Edvantage® #1® with Edlund's exclusive 2 year warranty.

New! Exclusive coating technology doubles wear life of gear

New! 4-sided knife design provides up to 10,000 openings before replacement

New! Larger ergonomic knob provides more comfort and reduces operator fatigue

New! Tool-free disassembly for easy cleaning and part replacement

MADE IN THE USA

Learn more at edlundco.com

Edlund Company LLC, 319 Queen City Park Road, Burlington, VT 05401, USA 800-772-2126 www.edlundco.com
An ISO 9001:2015 certified company

As seen in leading foodservice trade magazines.

Parts & Accessories



At Edlund, every component must perform flawlessly and in perfect harmony. Showcasing another investment in our high-tech manufacturing facility, a cutting-edge, digital stainless steel punch is programmed to precise specifications, ensuring quality, performance and unmatched customer satisfaction.



Parts & Accessories

CAN OPENERS

This is a listing of the most frequently ordered parts for Edlund Products. For parts not listed please call the factory.

Manual Can Opener Parts:

Replacement Kits Note: Complete Kits include Knife, Gear, Washers, Screws, etc. (where applicable)

Part Description	Minimum Order Qty.	Part Number
S-11/U-12 NSF S/S Knife and Gear Replacement Kit	6	KT1415
SG2/G-2 NSF S/S Knife and Gear Replacement Kit	6	KT1316
Edvantage® #1® Knife and Gear Replacement Kit	6	KT1000
#1® Knife and Gear Replacement Kit	6	KT1100
#2® Knife and Gear Replacement Kit	6	KT1200
#1® Gear, Single Pack	50	G003SP
#2® Gear, Single Pack	50	G004SP
#1® Knife, Single Pack	50	K004SP
#2® Knife, Single Pack	50	K005SP

Manual Can Opener Parts: Individual Parts

Part Description	Part Number
U-12/G-2 7/8" Base with Insert	A928SP
U-12/SG2/G-2 7/8" Base Stainless Steel with Insert	A929SP
#1® Plated Steel Base with Insert	A930SP
#1® Stainless Steel Base with Insert	A931SP
#1® Knifeholder	H019
#1® or #2® Spring Release Repair Clamp	A5191
#2® Plated Steel Base with Insert	A932SP
#2® Stainless Steel Base with Insert	A933SP
#2® Knifeholder	H020
S-11 Stainless Knifeholder	H063AR
S-11 Stainless Steel Base	A949SP
Stainless Steel Clamp Base for S-11/U-12/G-2	A944C
ST-93 Cleaning Tool	38500

Electric Can Opener Parts: (203, 266)

Replacement Kits (Sold only in packs of six)

Part Description	Minimum Order Qty.	Part Number
203/266 Knife and Gear Repair Kit (with stud)	6	KT2326

Can Opener Parts: Electric (203, 266) Individual Parts

Part Description	Part Number
Stainless Knifeholder for Electric Can Openers	H072

Can Opener Parts: #270 NSF Electric Can Opener

Replacement Kits (Sold only in packs of six)

Part Description	Minimum Order Qty.	Part Number
270 Knife and Gear Repair Kit (inc. O Ring)	6	KT2700

Can Opener Parts: #270 NSF Electric Can Opener Individual Parts

Part Description	Part Number
Stainless Knifeholder	A288
Shield	A279

Note: #270 parts are not interchangeable with other electric can openers.



Edvantage® #1® Manual Can Opener. Made in U.S.A.



Edvantage® #1® Manual Can Opener Parts



Crown Punch Can Opener Parts: *For Standard Round Cans (603, 600, 502, 404, 401, 400, 307, 303, 300, 214, 211, 202)

Part Description	Part Number
Blade (now all stainless)	A756
Standard Guard Ring Locator	A720
Blade Retaining Clip	C084H
J Blade for #610/625	A756J

Note: All 3 parts listed are required for each can size. J Blade not recommended for 625A or system.

Crown Punch Can Opener Parts: *For Non-Standard Round Cans and Square Cans

Part Description	Part Number
Blade	Call Factory
Guard Ring Locator	Call Factory
Blade Retaining Clip	Call Factory

Note: *Specify Size: #603 is 6 3/8" outside diameter, or #10 can. #307 is 3 7/8" outside diameter, "soup" can, etc.

Parts & Accessories

SCALES

Scale Parts: Mechanical Spring Scales

Part Description	Part Number
Standard Stainless Steel Platform (SS-16 only)	A683
Oversized Platform (SS-16 only)	A684
Potato (french fry) Platform (SS-16 only)	A685
CK-32 Calibration Kit (S/S Scales only)	K060
CK-1000 Metric Calibration Kit	K062

Scale Parts: Digital Scales

Part Description	Part Number
Power Supply: for WSC/EDL/DFG/BRAVO Scales (115/230 Dual Voltage)	S549
Power Supply: for LFT/EF/PE and DS Scales (115/230V Dual Voltage)	S549
Power Supply: for ERS/WRD/EPZ Scales	PS5006
Power Supply: for BBPZ and EDPZ Scales	PS200
Power Supply: for LP-130/330 (115V)	S620
Power Supply: for E-160/E-80/E-818 (115V)	S199
DS-2 Calibration Weights	W101
EDL/DS-10/BBPZ/EDPZ Calibration Weights	W102
RGS 500 g Weight	W0941M
Cover BRV-480 - 3 pack	CV075
Cover BRV-320 - 3 pack	CV074
Cover BRV-160 - 3 pack	CV073
Cover BRVS-10 - 3 pack	CV076
Cover BBPZ - 3 pack	CV081

Scale Parts: Bakers Dough Scales

Part Description	Part Number
Oversized Footed Plastic Scoop	S336
Counter Weight for Scoop	C241
1# Weight	W0941
2# Weight	W0942
4# Weight	W0944
8# Weight	W0948



Ordering & Warranty Information

Edlund Company is not responsible for typographical errors.

- TERMS:** Net 30 days for credit approved stocking distributors or C.O.D. Prices are F.O.B. Burlington, VT. and listed in U.S. dollars. Payment in any other currency will not be accepted. Prices subject to change without notice. All orders subject to acceptance at Burlington, VT.
- MINIMUM ORDER:** Note: All special orders and orders under \$500.00 list are subject to a \$35.00 handling charge.
- ORDER QUANTITIES:** Master case quantities shown. No broken case charge. Tongs and can punches are not available in single units.
- RETURNS:** No merchandise may be returned without authorization. Please visit our website for a RMA#. Merchandise authorized for return is subject to 40% restocking charge and must be returned freight prepaid. Returned goods must be in new and unused condition and not more than 1 year old.
- CLAIMS:** Note: Before signing for delivery, please count number of cartons and inspect for damage. If damage or shortage is found, please note as such when signing the shipping documents and call 1-800-772-2126 within 48 hours. Failure to follow these procedures will result in loss of credit. Carriers require all contents and original containers to be available for inspection. Failure to provide this will result in loss of claim.
- TAXES:** Prices quoted do not include state, federal, foreign, excise, municipal or other sales or use taxes.

WARRANTY:

All Edlund products are guaranteed against defects in material and workmanship for a period of one year from date of purchase, except where specifically noted. The company's obligation under this warranty is limited to repairing or replacing without charge any part or parts found to be defective **under normal use**. It is the responsibility of the purchaser to return the entire unit to the factory, **properly packed, transportation charges prepaid**. This warranty does not cover knives and gears on can openers. No other warranty, written or verbal, is authorized by the company. Warranty charges do not include state, federal, foreign, excise, municipal, or other sales or use taxes. All such taxes are the responsibility of the purchaser.

Carrier is responsible for merchandise in transit to you.

Edlund Company reserves the right to make changes in design or add any improvements on any product. The right is always reserved to modify our equipment because of factors beyond our control and government regulations. Charges to update equipment do not constitute a warranty charge.

The following are not covered under warranty:

1. failure from neglect, abuse, careless handling or mis-application of unit.
2. failure caused by improper maintenance.

Return products to: Edlund Company, LLC, Service Department
319 Queen City Park Rd., Burlington, VT 05401, USA
An ISO 9001:2015 Company

Phone: (800) 772-2126 & (802) 862-9661 • Fax: (802) 862-4822

NOTE:

The products featured in this catalog may pertain only to the North American markets (USA, Canada, and Mexico) and any warranties listed herein may be void on products sold outside of North America without prior authorization. U.S.A. based dealers selling into Canada and/or Mexico on a direct basis are responsible for all freight and customs costs incurred on products returned for warranty claims back to their selling location or warranties will be voided.

OUR QUALITY POLICY:

The Edlund Company, through continual improvement of its Quality Management System, is committed to providing cost-effective solutions, outstanding quality, and value-added equipment that meets the ever-changing needs of a Global Foodservice Marketplace.



Edlund Company LLC, 319 Queen City Park Road, Burlington, VT 05401, USA an ISO 9001:2015 Company
800-772-2126 www.edlundco.com

an Ali Group Company



The Spirit of Excellence